



the
NEIGHBORHOOD



The Drywall Home You Want—At the Price You Didn't Expect.

2026





STANDARD FEATURES

INTERIOR

25 OZ. SHAW® CARPET WITH 5# REBOND PAD
& TACK STRIP
FINISHED CEILING JOINTS
LED RECESSED CAN LIGHTS THROUGHOUT
3" DOOR & WINDOW CASING AND 5" BASE TRIM
CEILING FANS IN PRIMARY BEDROOM & LIVING ROOM
PFISTER METAL FAUCETS THROUGHOUT
2" BLINDS THROUGHOUT
FIRE EXTINGUISHER
DRYWALL THROUGHOUT

KITCHEN

KITCHEN HARDWOOD CABINETS W/LC STILES
- 30" CABINETS IN SINGLE WIDES
- 42" CABINETS IN MULTI-SECTION
STAINLESS STEEL APPLIANCES
- 30" DLX ELECTRIC RANGE
- 18 CU FT FROST FREE REFRIGERATOR W/ICEMAKER
- GARBAGE DISPOSAL
- DISHWASHER
- STAINLESS STEEL RANGE HOOD
KITCHEN ISLAND STANDARD - VARIES BY PRINT

BATHS

60" FIBERGLASS SHOWER IN PRIMARY BATH
TUB/SHOWER IN BATH 2
CURVED SHOWER ROD - BATH 2
TOWEL BAR & TISSUE HOLDERS THROUGHOUT
BANK OF DRAWERS IN PRIMARY BATH (DW ONLY)

INSULATION

ZONE III INSULATION PACKAGE
- R-30 BLOWN CEILING INSULATION W/VAPOR BARRIER
- R-21 FIBERGLASS INSULATION IN WALLS
- R-27 FIBERGLASS INSULATION IN FLOORS
- HEAT DUCTS WITH IN-FLOOR CROSSOVER
(MULTI-SECTION)

EXTERIOR

14' DORMER - MULTI SECTION ONLY
(2) EXTERIOR GFI RECEPTACLES
(2) EXTERIOR FROST-FREE FAUCETS
ARGON GAS LOW E VINYL WINDOWS
SHUTTERS ALL AROUND
RAISED SIDING FOR SKIRTING
KWIKSET® INTERIOR & EXTERIOR DOORKNOBS
W/MICROBAN ANTIMICROBIAL TECHNOLOGY

UTILITIES

200 AMP
CARRIER® ELECTRIC FURNACE
PROGRAMMABLE THERMOSTAT
40 GALLON ELECTRIC WATER HEATER
WATER SHUT OFFS THROUGHOUT
FURNACE & WATER HEATER DOORS
CONDUIT DROP FOR A/C

CONSTRUCTION

2" X 6" EXTERIOR WALLS
20# ROOF LOAD
ARCHITECTURAL SHINGLES
7/16" OSB EXTERIOR SHEATHING W/WINDWRAP
PIER SAVERS ON DOORS (VARIES BY PRINT)



TABLE OF CONTENTS

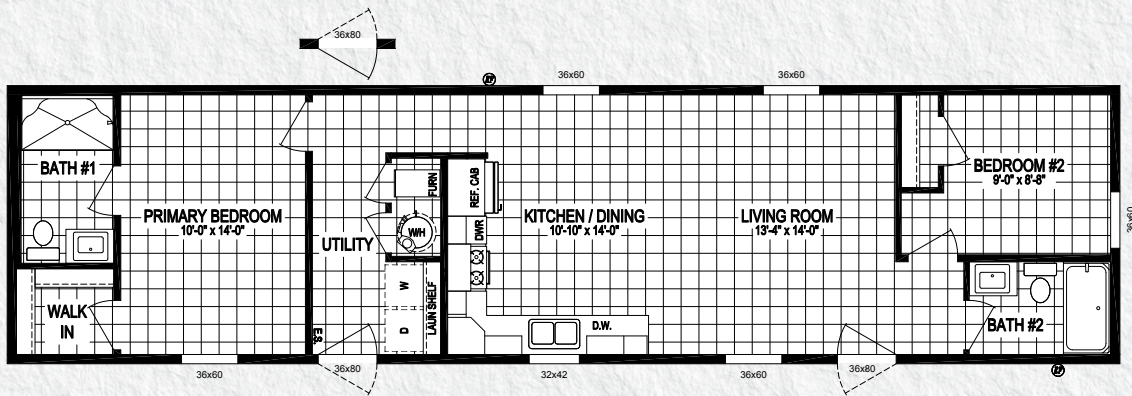
NAME	MODEL	SIZE	SQ. FT.	BEDROOMS	BATHS	PAGE
	6016-SW021	60x16	900	2	2	4
	6616-SW022	66x16	990	3	2	5
	7616-SW023	76x16	1140	3	2	6
Bluffton 44	4428-MS066-1	44x28	1159	3	2	7
Bluffton 48	4828-MS066-2	48x28	1264	3	2	8
Evansville 52	5228-MS067-1	52x28	1369	3	2	9
Carmel 56	5628-MS068	56x28	1408	3	2	10
Huntington 56	5628-MS067-2	56x28	1475	4	2	11
Huntington 60	6028-MS067-3	60x28	1580	4	2	12

MODEL NUMBER:

6016-SW021

60 x 16 | 900 Sq. Ft. 2 Bed | 2 Bath

SINGLE WIDE HOMES

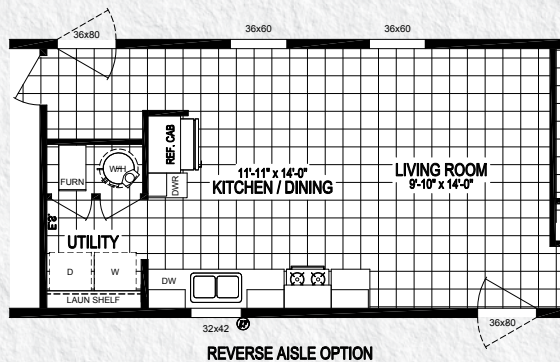
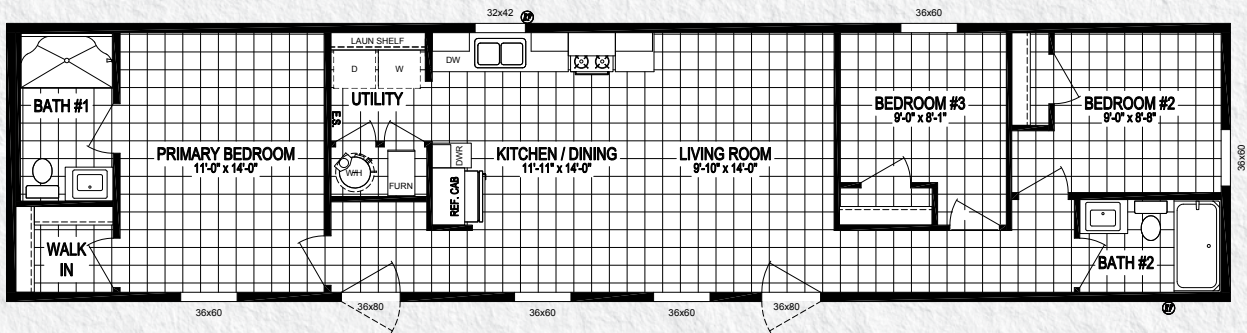


MODEL NUMBER:

6616-SW022

66 x 16 | 990 Sq. Ft. 3 Bed | 2 Bath

SINGLE WIDE HOMES

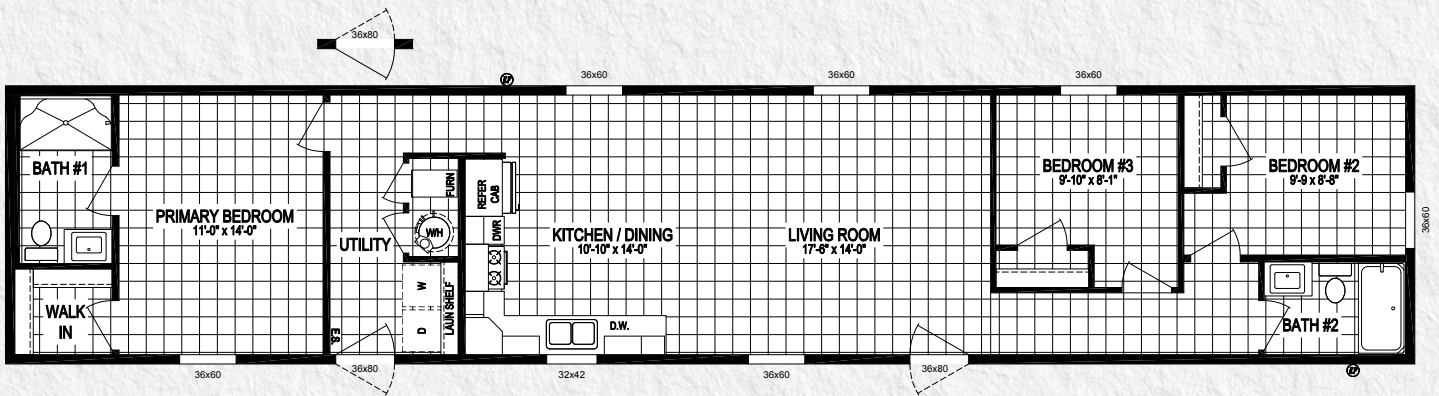


MODEL NUMBER:

7616-SW023

76 x 16 | 1140 Sq. Ft. 3 Bed | 2 Bath

SINGLE WIDE HOMES

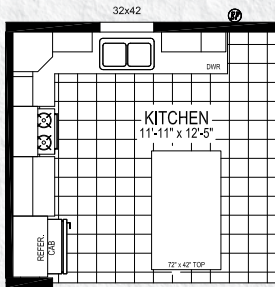
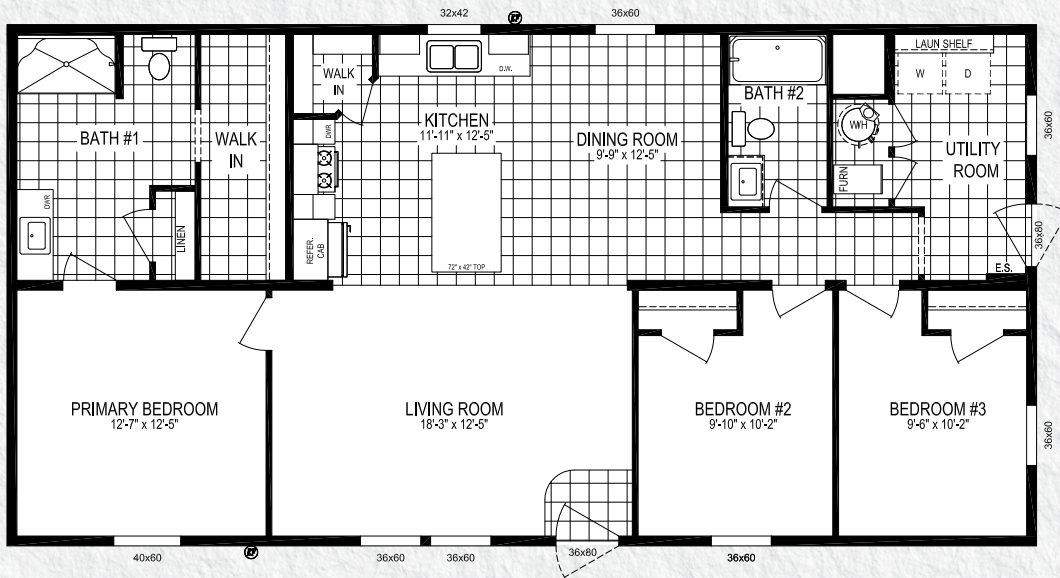


MODEL NUMBER:

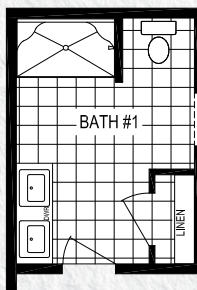
5228-MS067-1

52 x 28 | 1369 Sq. Ft. 3 Bed | 2 Bath

EVANSVILLE 52



OPT. KITCHEN



OPT. DOUBLE LAV

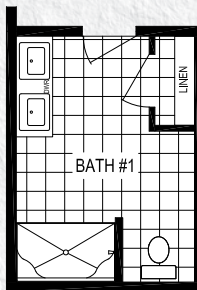
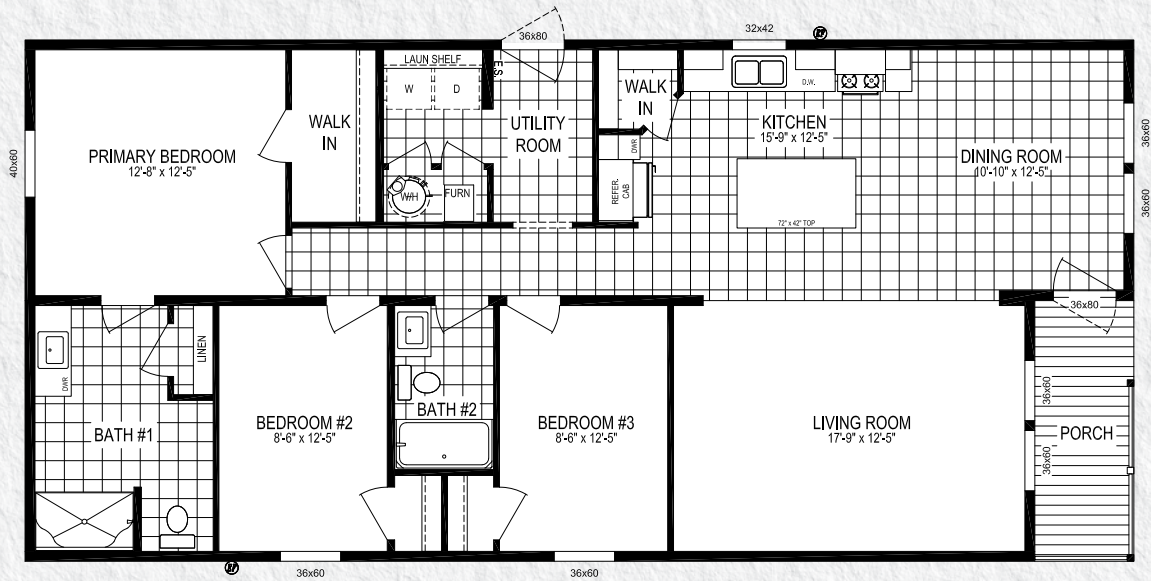


MODEL NUMBER:

5628-MS068

56 x 28 | 1408 Sq. Ft. 3 Bed | 2 Bath

CARMEL 56



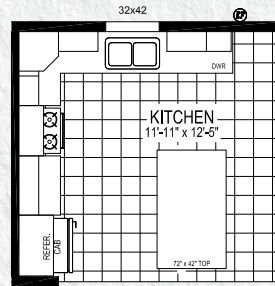
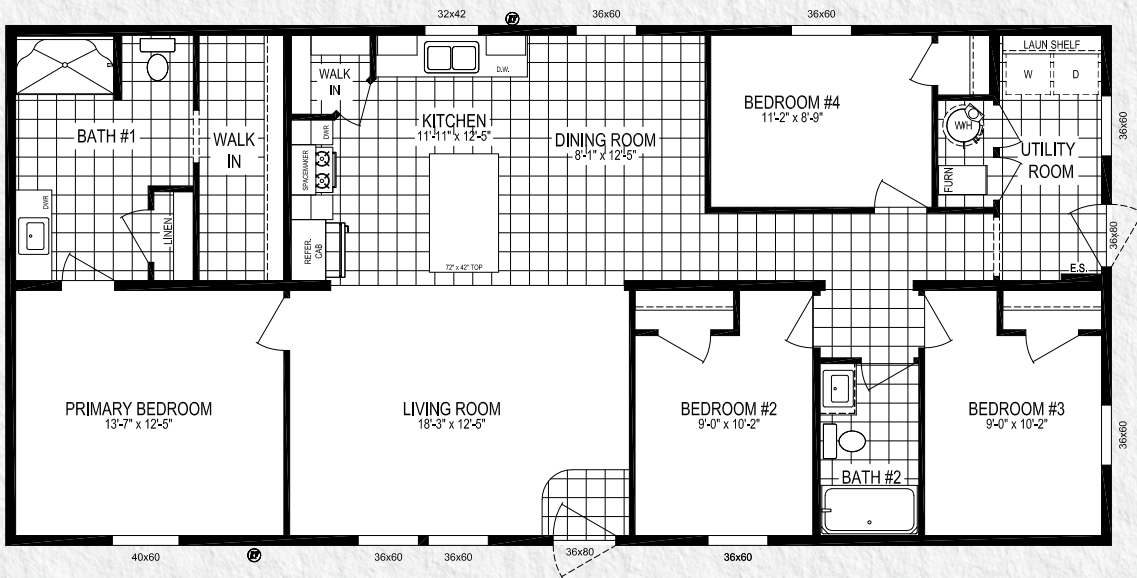
OPT. DOUBLE LAV

MODEL NUMBER:

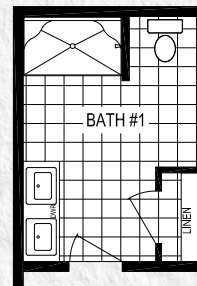
5628-MS067-2

56 x 28 | 1475 Sq. Ft. 4 Bed | 2 Bath

HUNTINGTON 56



OPT. KITCHEN



OPT. DOUBLE LAV

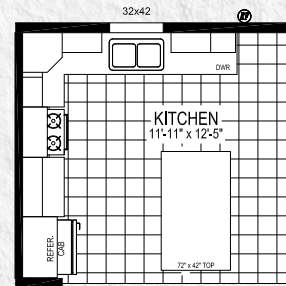
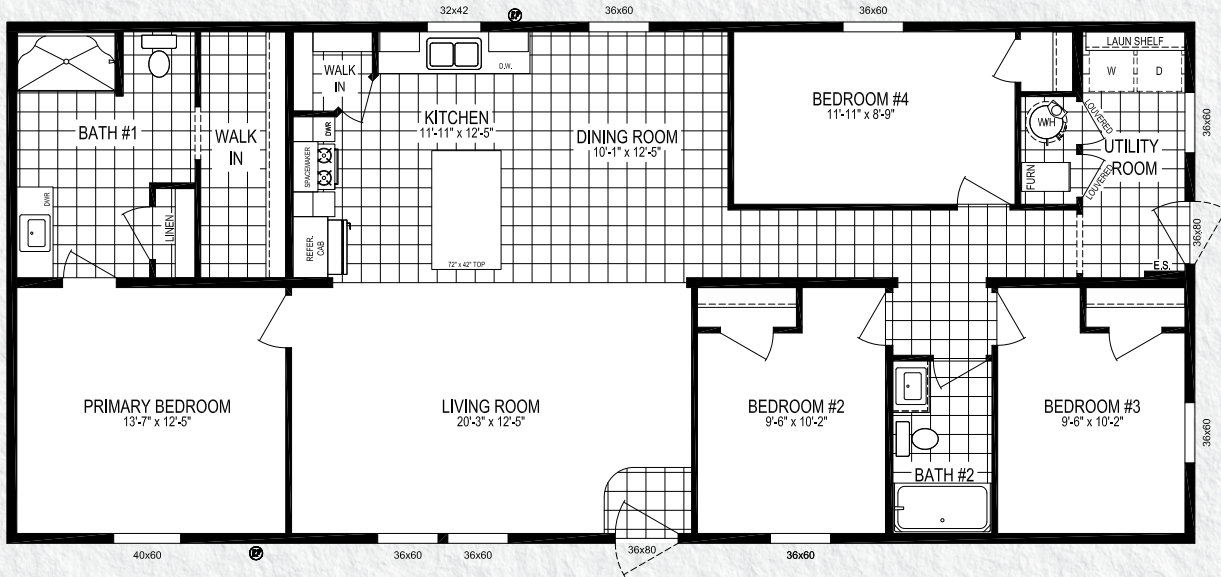


MODEL NUMBER:

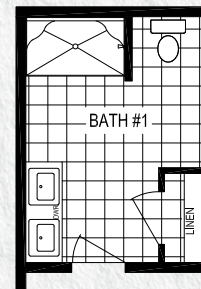
6028-MS067-3

60 x 28 | 1580 Sq. Ft. 4 Bed | 2 Bath

HUNTINGTON 60



OPT. KITCHEN



OPT. DOUBLE LAV



INTERIOR PACKAGES



BLACK ACCENT INTERIOR PACKAGE

- 3" Black Base Trim & Door/Window Casing Throughout
- 2" Cove Moulding Main Living Areas
- 41" Black Wainscot w/Black 5" Chair Rail - (1) Wall in Dining Room
- Black Timber Vanities - Both Baths
- Black Timber Kitchen Island
- White Linen Kitchen Cabinets
- 3" Cabinet Crown - Black
- Black Shower Door

the
NEIGHBORHOOD

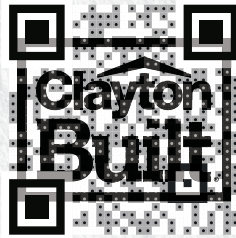
INTERIOR PACKAGES



OPTIONAL BLACK ACCENT WALL

the
NEIGHBORHOOD

BRANDS



Clayton Homes are Built Using Quality Brands

Honeywell



Turn to the Experts.™



Kwikset



SAMSUNG





the
NEIGHBORHOOD

2026



Your Local Home Builder



437 N. Main Street
Middlebury, IN 46540
574.825.7500
574.825.7569 fax

www.claytonmiddlebury.com

Because our company has a continuous product update process, specifications, floor plan lay-out and dimensions shown on this literature are subject to change without notice or obligations. Construction and design specifications as well as features presented conceptual, therefore should not be used as actual construction data and may not be offered in all series or models. Our Retailer will provide accurate, up-to-date information on available options and specifications for your home. 01/26

Clayton
middlebury