

2025



The Sahara

Modular Series



**ADVENTURE
HOMES**

DREAM IT. DESIGN IT. BUILD IT. LOVE IT.

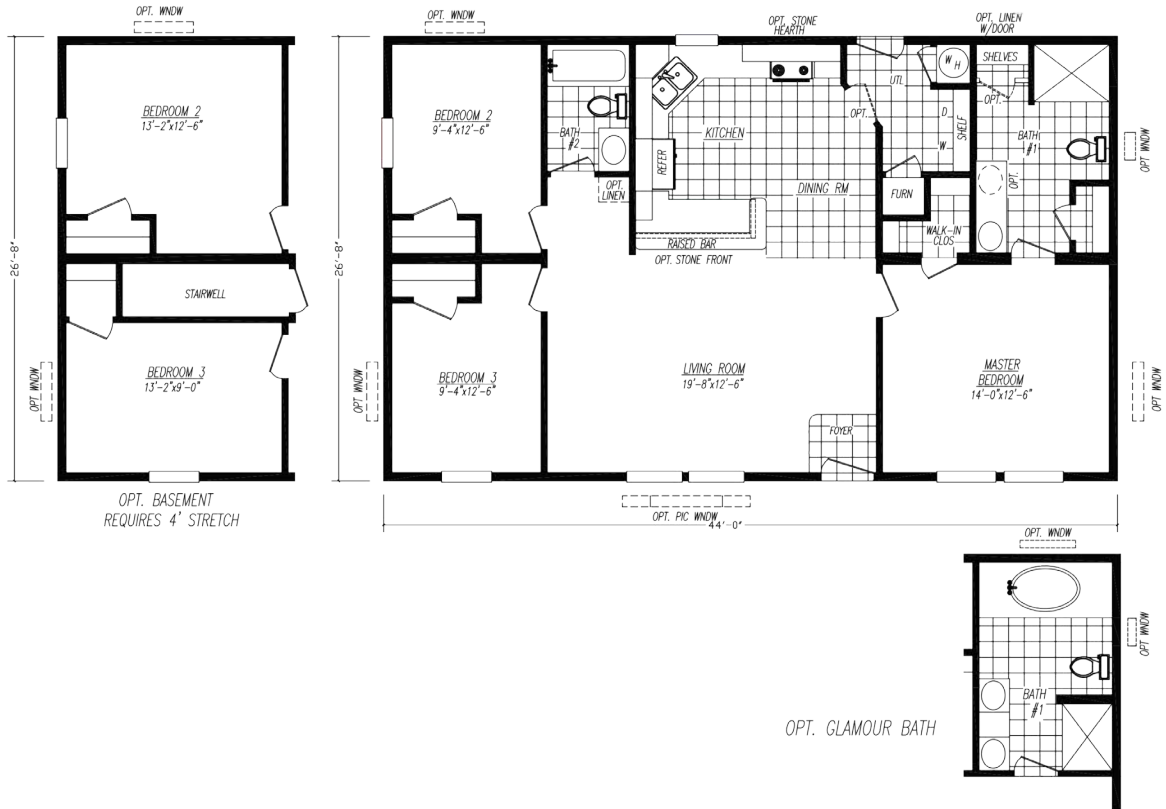
3 Bedroom • 2 Bath • Floor Size 1,214 sq. ft.



Adventure Homes Sahara Series can be customized to fit your every day needs and wants!

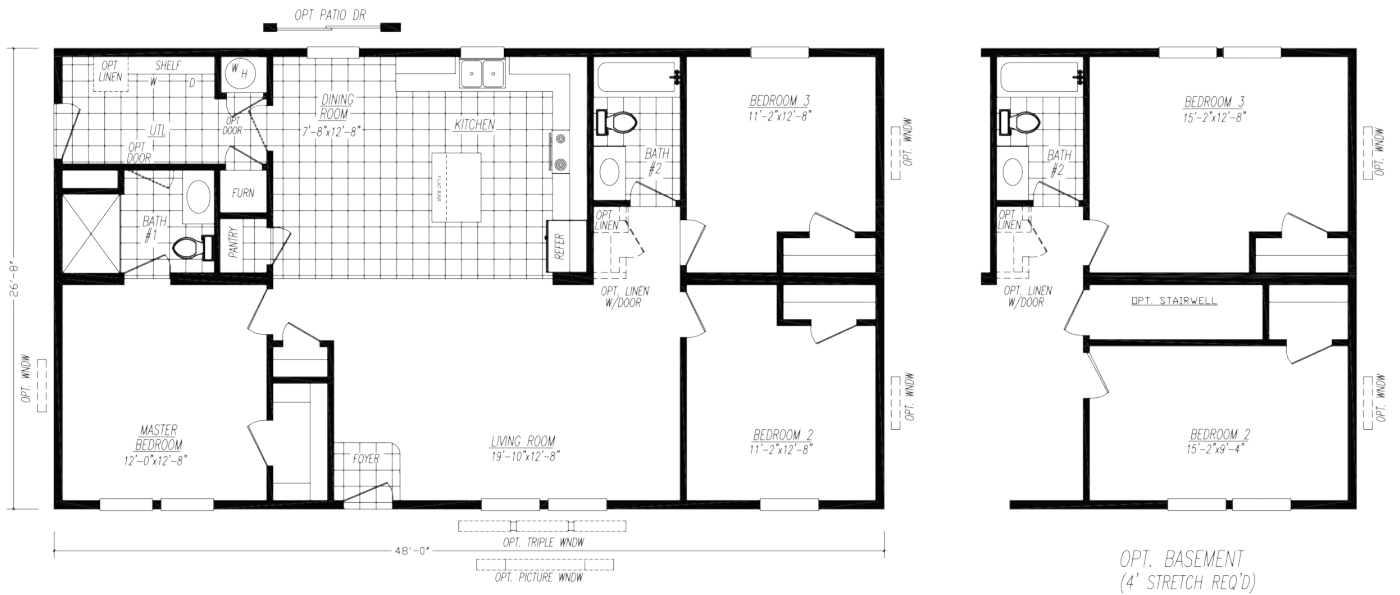
MOD2844-1

3 Bedroom • 2 Bath • Floor Size 1,174 sq. ft.



MOD4483M

3 Bedroom • 2 Bath • Floor Size 1,280 sq. ft.



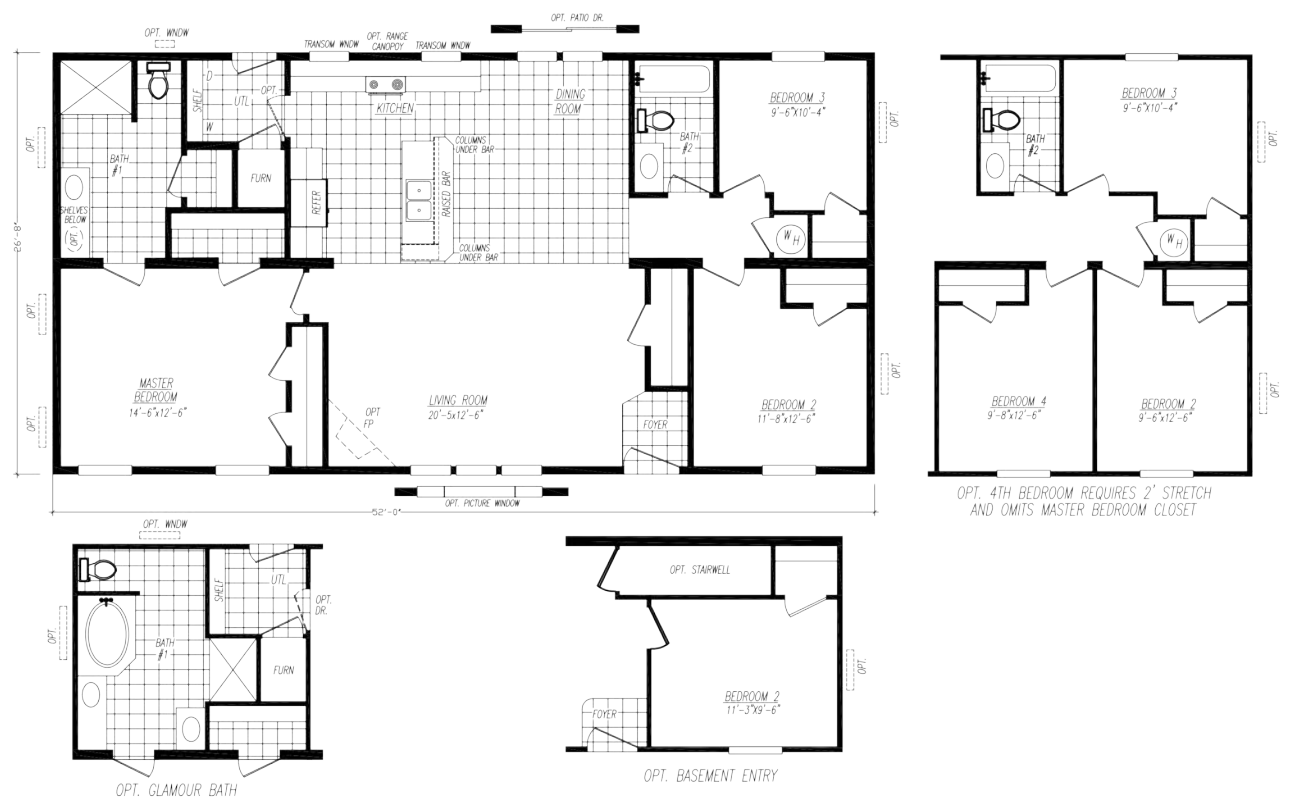
MOD2852-1

3 Bedroom • 2 Bath • Floor Size 1,387 sq. ft.



MOD4523U

3 Bedroom • 2 Bath • Floor Size 1,387 sq. ft.



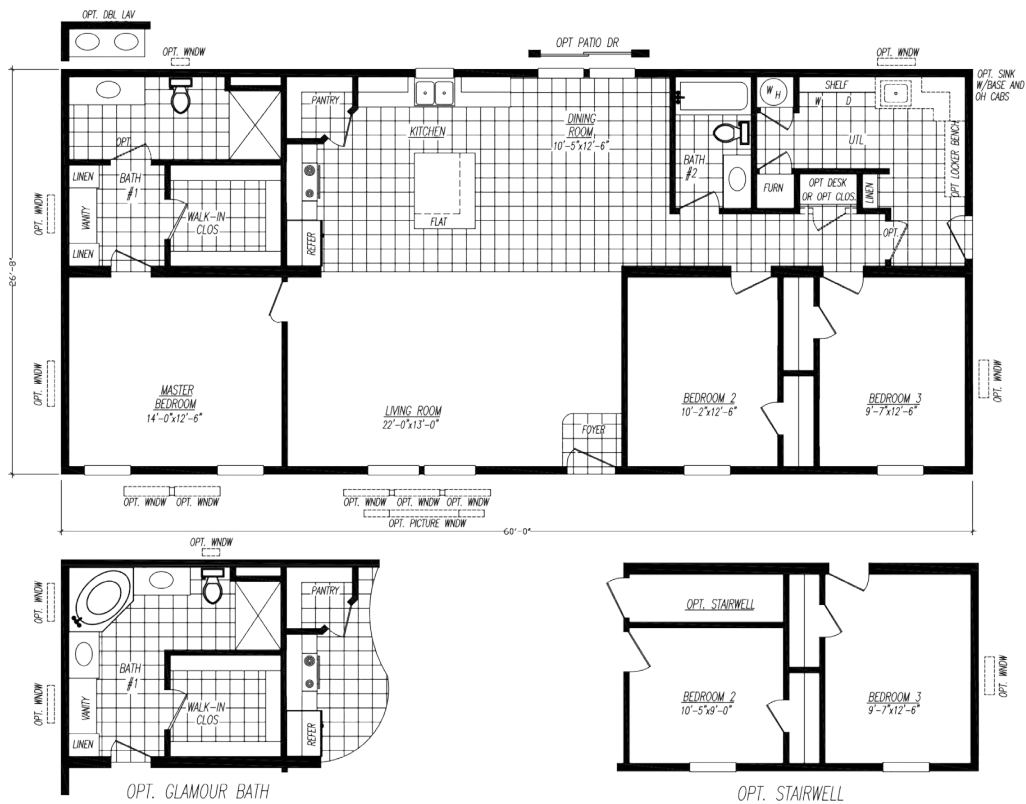
MOD2856-1

3 Bedroom • 2 Bath • Floor Size 1,494 sq. ft.



MOD4603GT

3 Bedroom • 2 Bath • Floor Size 1,600 sq. ft.



MOD4603S

3 Bedroom • 2 Bath • Floor Size 1,600 sq. ft.



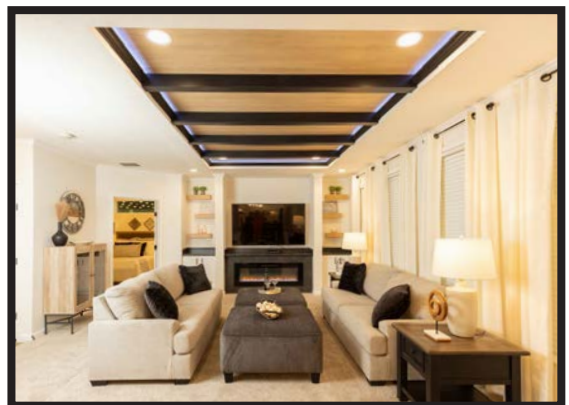
MOD4683B

3 Bedroom • 2 Bath • Floor Size 1,814 sq. ft.



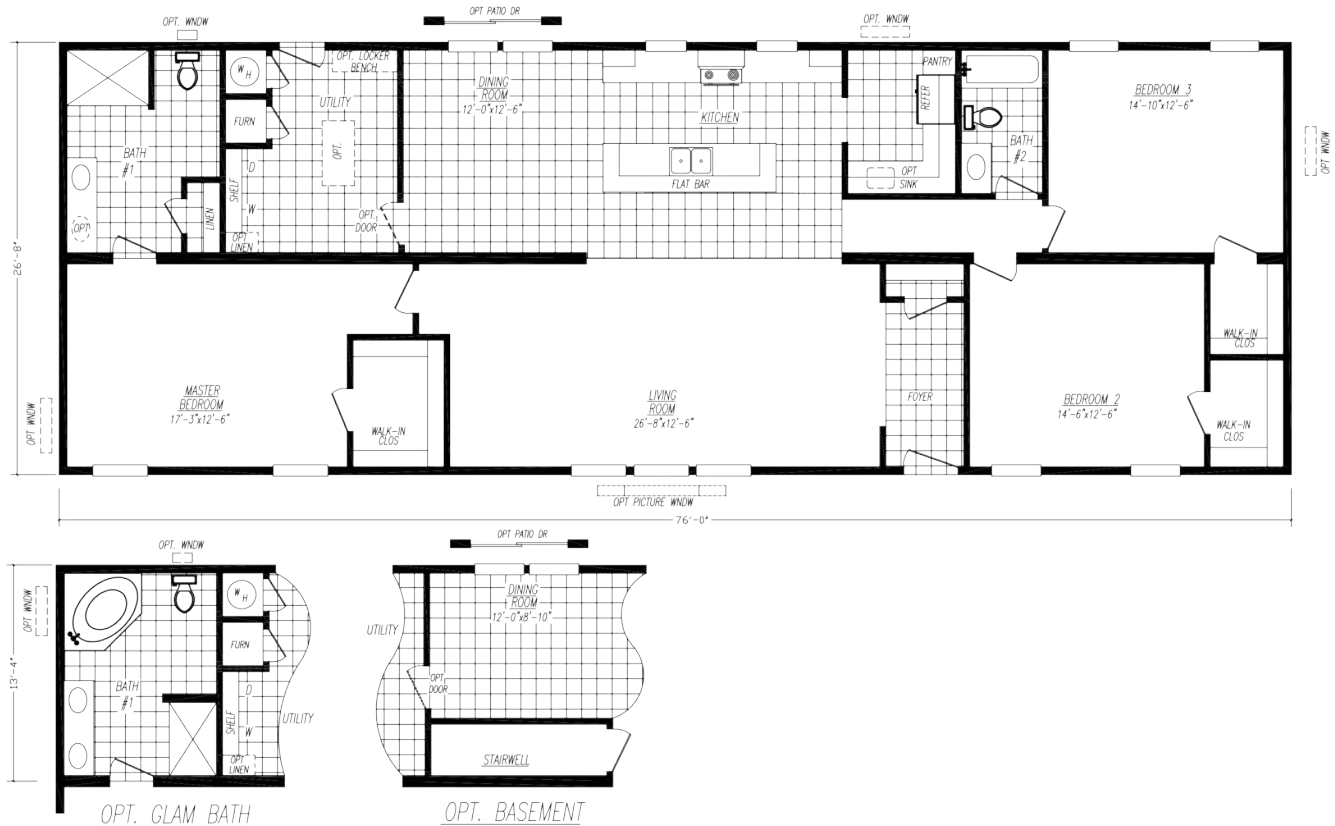
MOD4683Z

3 Bedroom • 2 Bath • Floor Size 1,814 sq. ft.



MOD4763N

3 Bedroom • 2 Bath • Floor Size 2,027 sq. ft.



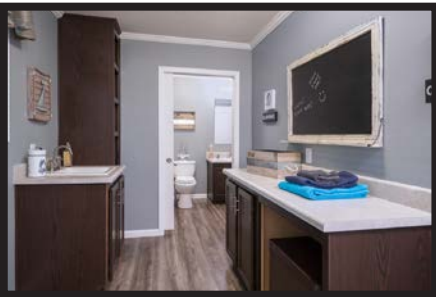
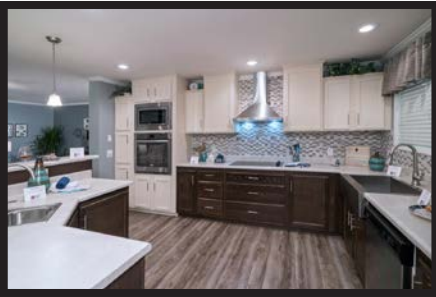
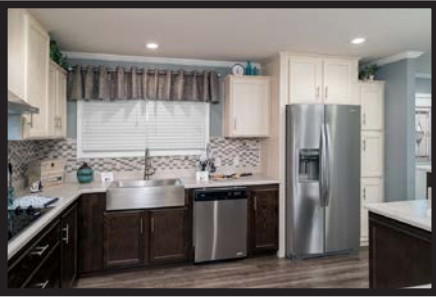
MOD0563S

3 Bedroom • 2 Bath • Floor Size 1,680 sq. ft.



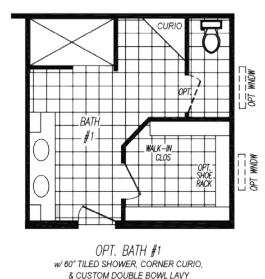
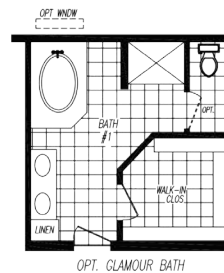
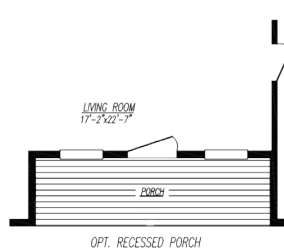
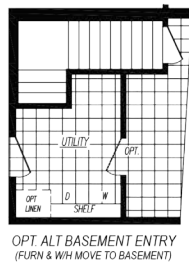
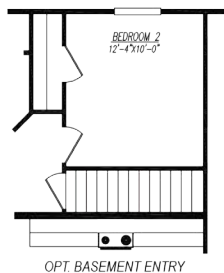
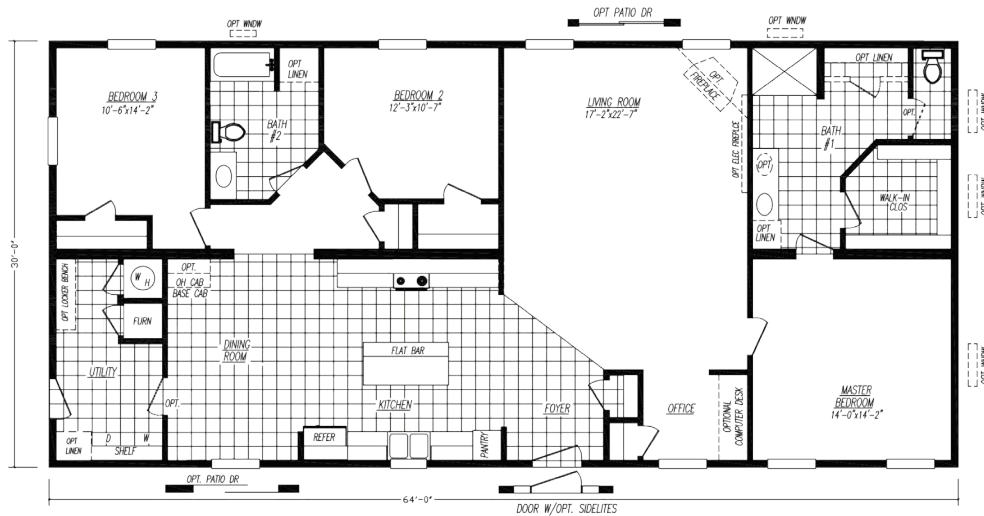
MOD0643B

3 Bedroom • 2 Bath • Floor Size 1,920 sq. ft.



MOD0643FF

3 Bedroom • 2 Bath • Floor Size 1,920 sq. ft.



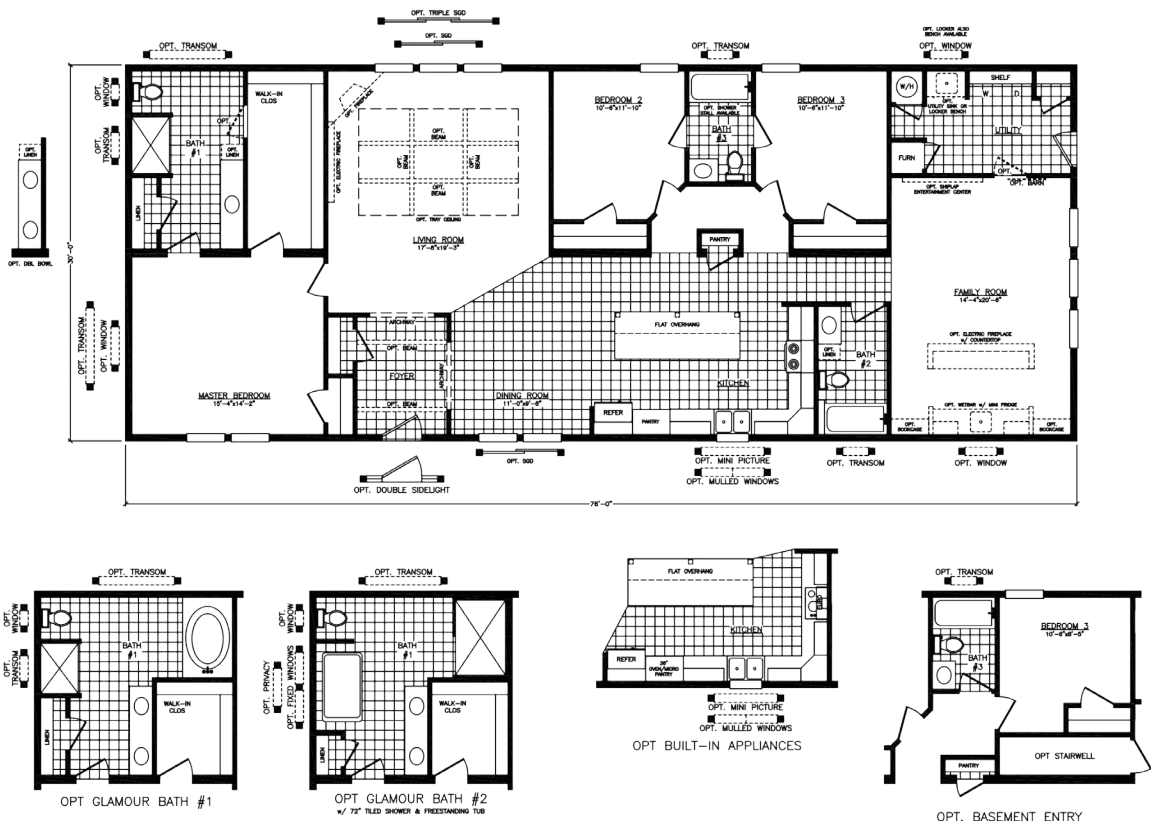
MOD0684F

4 Bedroom • 2 Bath • Floor Size 2,040 sq. ft.



MOD0763A

3 Bedroom • 3 Bath • Floor Size 2,280 sq. ft.



MOD0763E

3 Bedroom • 2 Bath • Floor Size 2,280 sq. ft.



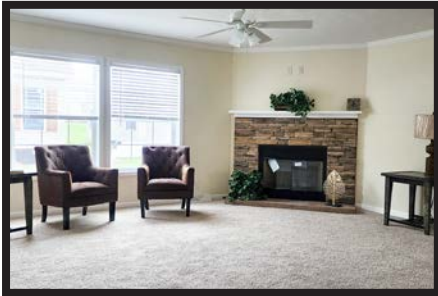
MOD0764C

4 Bedroom • 2 Bath • Floor Size 2,280 sq. ft.



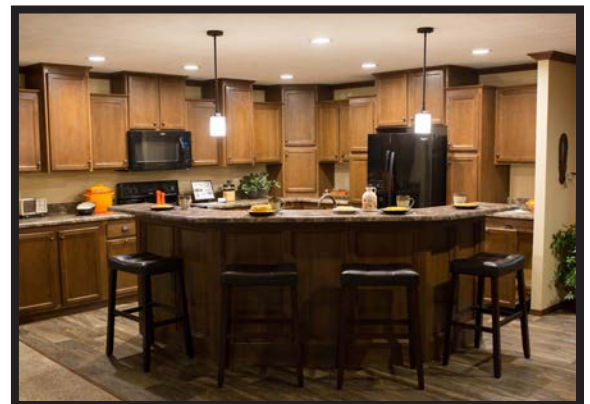
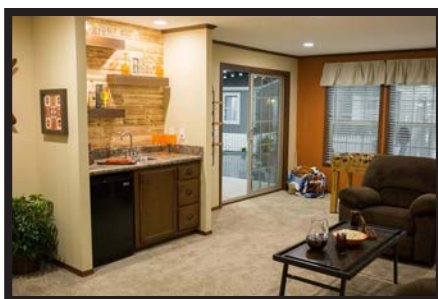
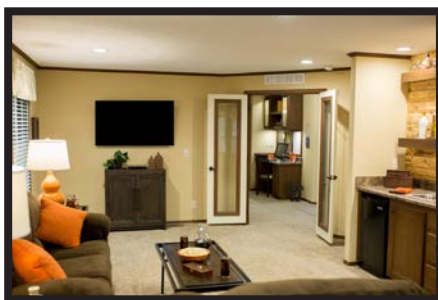
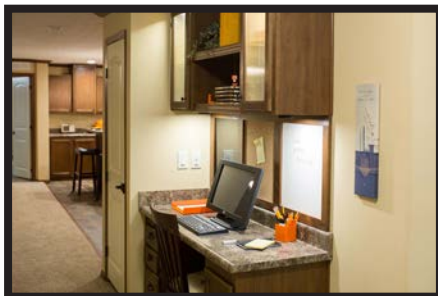
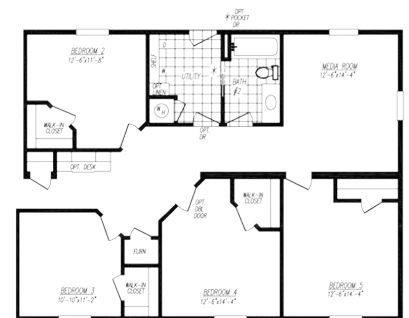
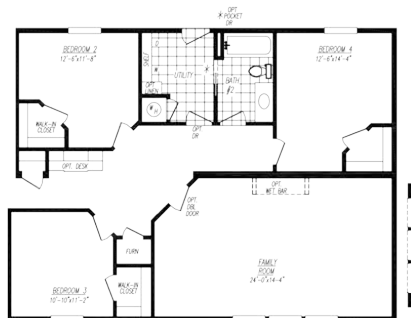
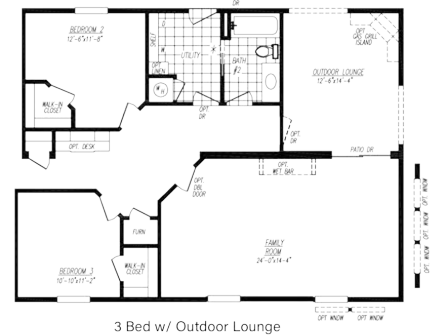
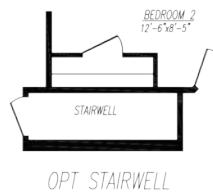
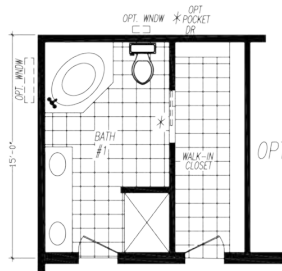
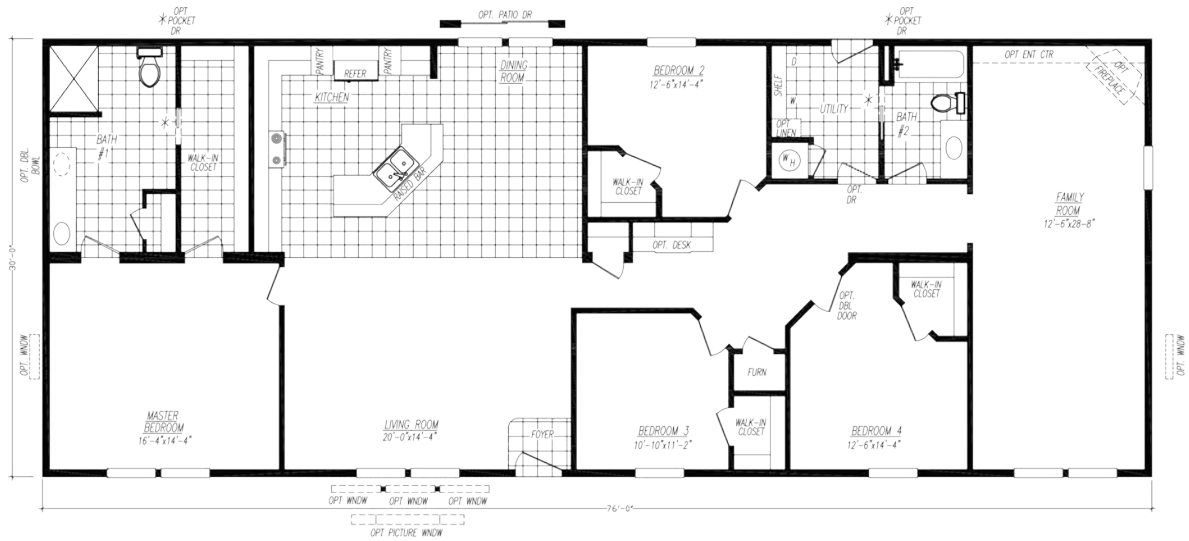
MOD0764L

4 Bedroom • 2 Bath • Floor Size 2,280 sq. ft.



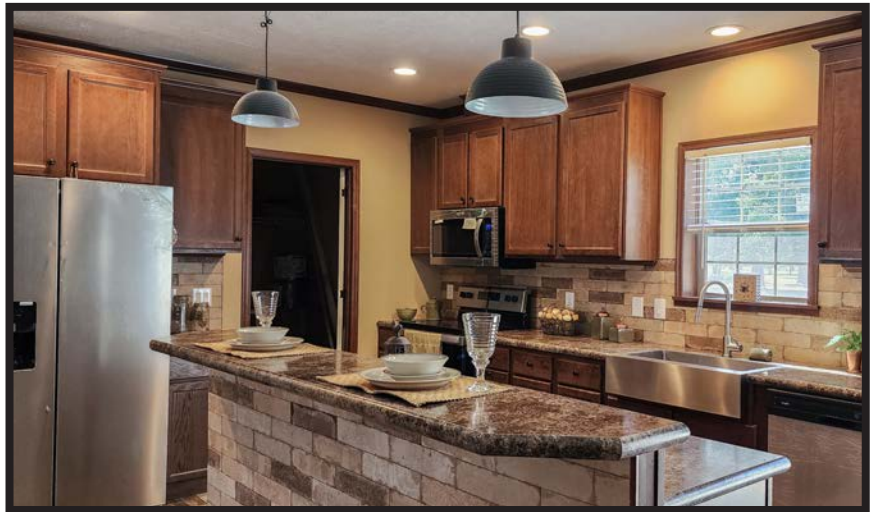
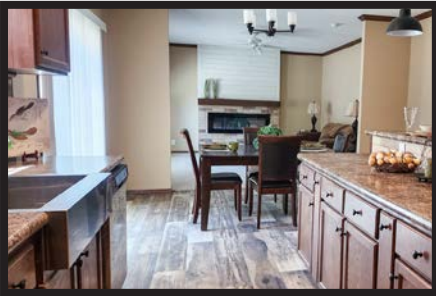
MOD0764R

4 Bedroom • 2 Bath • Floor Size 2,280 sq. ft.



MOD0765M

5 Bedroom • 3 Bath • Floor Size 2,280 sq. ft.



Sahara Modular Series

Standard Features

Frame & Floor

2x8 Solid Floor Joists 16" O.C. (24' Wide)
2x10 Solid Floor Joists 16" O.C. (28' & 32' Wide)
Disposable Carrier
OSB Tongue & Groove Floor Decking
Double 2x10 Rim Joist
25oz. Plush Carpet
1/2" Rebond Carpet Pad
Vinyl Flooring

Exterior

2x6 Exterior Walls 16" O.C. w/ R-21 Insulation
7/16" OSB Wrap under Vinyl Siding
Housewrap w/ Window Tape
Vinyl Siding
Raised Panel Shutters at FDS Only
Vinyl Single Hung Gridless Windows - Low "E" w/ Argon
Foam All Exterior Windows
38"x 82" R.O. 6 Panel Residential Front Door (No Storm)
34"x 82" R.O. 6 Panel Residential Rear Door (No Storm)
Light Fixtures at All Exterior Doors
50 LB GSL Roof Load

Ceiling & Roof

8ft Flat Stomped Textured Ceiling
Beamless Mateline
5/12 Roof Pitch w/ Full Length Ridge Vent
Architectural Shingles w/ Water & Ice Shield
R-60 Roof Insulation

Kitchen

Black Electric Coil Top Range
Black 18cf Refrigerator
Black 30" Power Range Hood
Finished Base Cabinets & Center Shelves
30" Overhead Cabinets w/ Adjustable Shelves
Shaker Style Hardwood Cabinet Doors & Stiles
Concealed Cabinet Door Hinges
Dovetail Drawers Throughout
(1) Bank of Drawers w/ Residential Rails & Guides
Laminated Countertops w/ 1"x4" Laminate Backsplash
Stainless Steel Kitchen Sink
Nickel Gooseneck Faucet w/ Pulldown Sprayer
Cabinet over Range & Shelf over Refrigerator

Bath

1pc 54" Shower Stall (Bath #1)
1pc Tub & Shower Combo (Additional Bathrooms)
Laminated Countertops w/ 1"x4" Laminate Backsplash
Renaissance Mirror Above Each Bathroom Sink
Vanity Lights Above Each Bathroom Mirror
Power Exhaust Fan in Bathroom(s)
China Raised & Elongated Commode in Bathroom(s)
White Oval China Sink(s) w/ Single Lever Faucet(s)

Interior

1/2" Finished Drywall Throughout
2x4 Interior Walls 16" O.C.
3" MDF Stile Trim Throughout
2 Panel White Interior Doors Throughout
Door Stop All 3 Sides
Mortised Interior Door Hinges
2" Plastic Mini-Blinds Throughout
Wire Closet Shelving
Lino Entry at Front Door
Wire Shelf above Washer & Dryer

Electrical, Plumbing & Heating

Smoke/Carbon Monoxide Detectors (combo)
200 AMP Service w/ Electric Furnace
5 Wire Digital Thermostat
Whole House Fan Switch
Return Air Through Ceiling Registers
40 Gallon Electric Water Heater
(1) Exterior Faucet (FDS)
(2) Exterior Electrical Receptacles (1 FDS & 1 ODS)
Whole House Shut-off Valve near Water Heater
Water Shut-off Valves (All Sinks & Commodes)
Plumb & Wire for Washer & Dryer
All Plumbing - STUBBED THRU FLOOR
Duct Work - NOT INCLUDED
Register Boots Installed
Can Lights in Kitchen w/ Chandelier in Dining Room
Ceiling Lights Throughout

Because of continuous product improvements, specifications are subject to change without notice or obligation.

All features are subject to State Approvals.

ADVENTURE HOMES

www.AdventureHomes.net

1119 Fuller Drive, Garrett, IN 46738

877-510-1955



January
2025