

2025



The Mojave

Single Series



**ADVENTURE
HOMES**

DREAM IT. DESIGN IT. BUILD IT. LOVE IT.

The *Lincoln*

11'-5"

OPT. WINDOW

OPT. LINOLEUM MASTER BEDROOM

MASTER BEDROOM
9'-6"x11'-0"

BATH

OPT. STORAGE CLOSET

DINING ROOM

UTILITY

1 OPT. BASS & TUB/SHOWER

LIVING ROOM
15'-6"x11'-0"

F

W/H

REFR

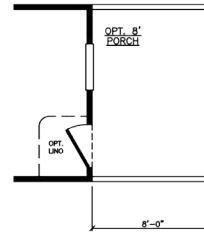
KITCHEN

OPT. LINO

DOOR MOVES WITH PORCH OPT.

OPT. 4" STRETCH MASTER BEDROOM

40'-0"



48'-0"

OPT. WINDOW

11'-5"

OPT. WASH. & DRYER

MASTER BEDROOM
9'-6"x11'-0"

UTILITY

BATH #1

OPT. BATH & LINEN CLOSET

DINING ROOM

OPT. STORAGE CLOSET

LIVING ROOM
15'-0"x11'-0"

BEDROOM #2
8'-5"x11'-0"

KITCHEN

REFER

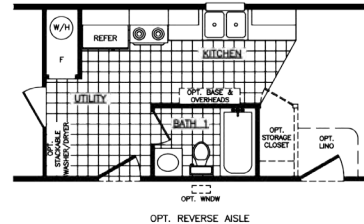
W/H

OPT. LIN.

ADD 2'-4" STRETCH
LIVING ROOM FOR OPT.
12' STRETCH

ADD 1'-8" STRETCH
BEDROOM #2 FOR OPT.
12' STRETCH

OPT. 8' FOOT STRETCH 2 BEDROOM/1 BATH



The Vantage

13'-4"

OPT. WINDOW

W/H

W D

SHELF

DINING ROOM

LIVING ROOM
10'-5" x 12'-8"

MASTER BEDROOM
10'-6" x 10'-4"

BATH 1

REFR

KITCHEN

OPT. LINEN

DOOR MOVES WITH PORCH OPT.

40'-0"

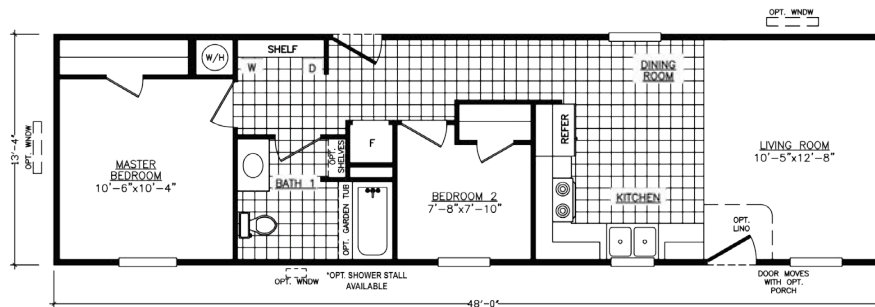
OPT. WINDOW

*OPT. SHOWER STALL AVAILABLE

OPT. 8' PORCH

OPT PATIO DOOR

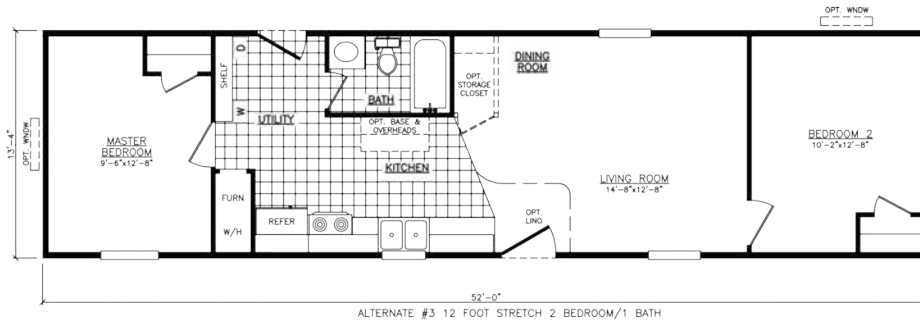
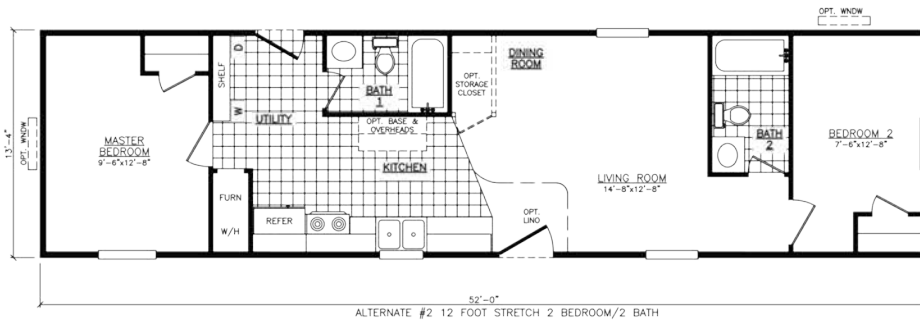
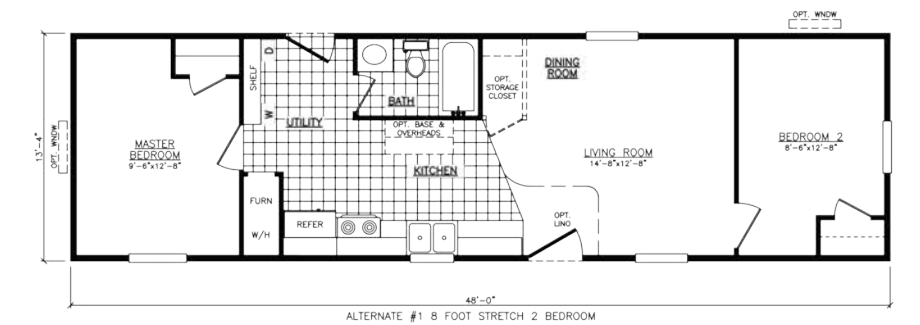
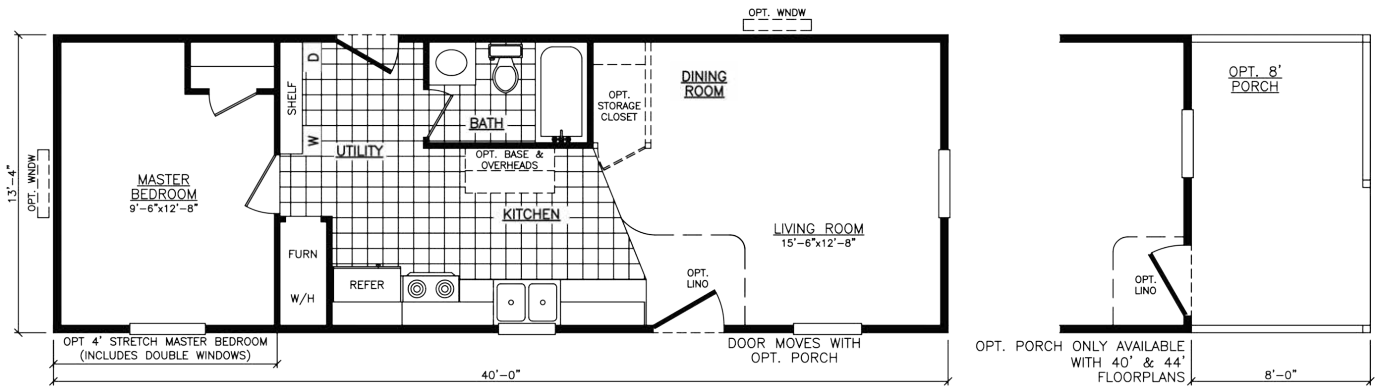
OPT. LINO



OPT. 8' STRETCH WITH 2ND BEDROOM

The Sequoia

Model 2401S
1 Bedroom • 1 Bath • Floor Size 534 sq. ft.



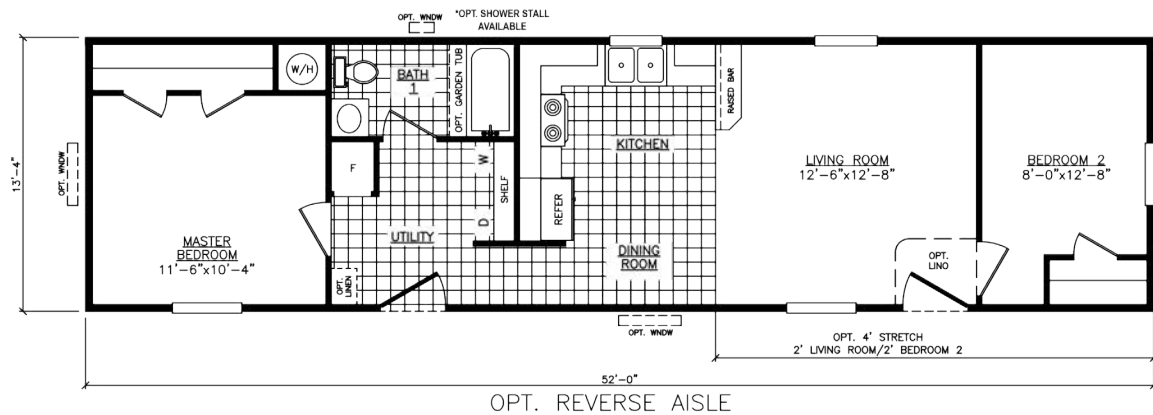
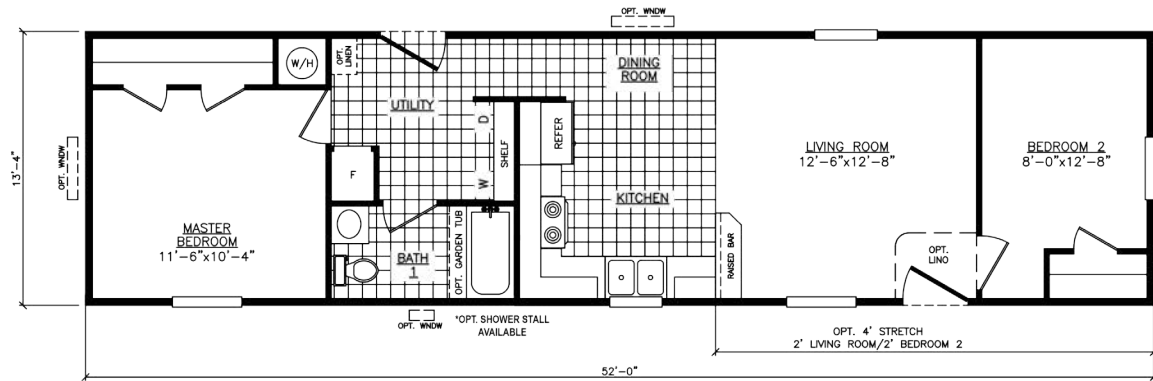
Every home built in our facility is constructed with premium materials in a climate-controlled enclosed building. By eliminating weather-damaged building supplies and weather-related delays, our state-of-the art process ensures precise and quality construction.

All homes built by Adventure meet, and in many cases exceed, federal HUD code.

Adventure Homes Mojave Series can be customized to fit your every day needs and wants!

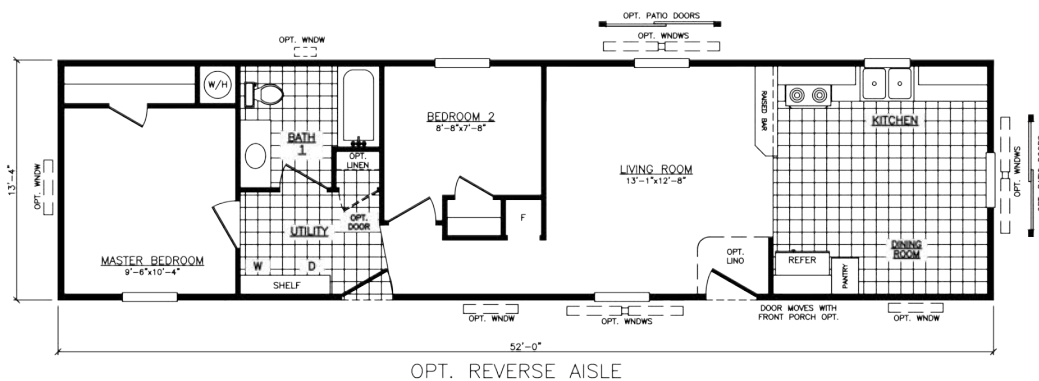
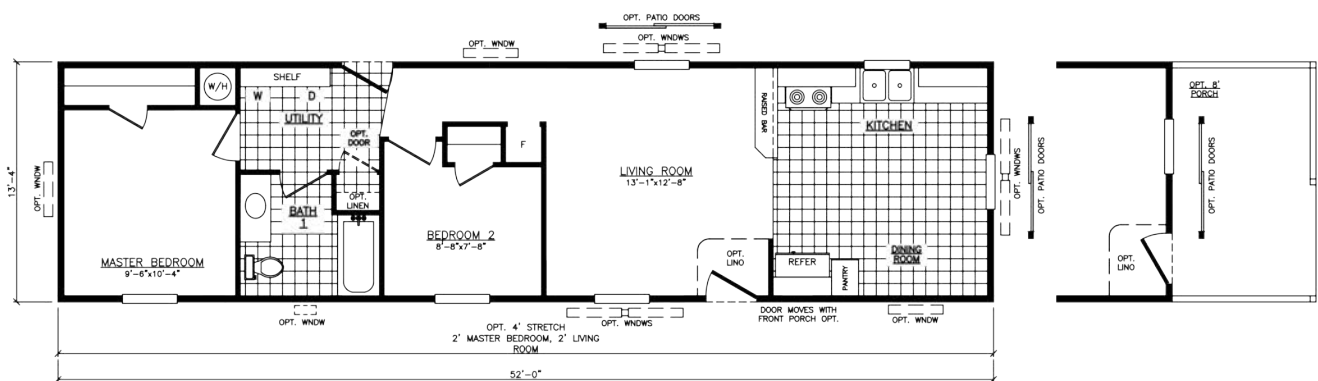
The *Sierra* Model 2522C
2 Bedroom • 1 Bath • Floor Size 694 sq. ft.

The *Sierra* Model 2522C
2 Bedroom • 1 Bath • Floor Size 694 sq. ft.



The *Northwest* Model 2522W
2 Bedroom • 1 Bath • Floor Size 694 sq. ft.

The *Northwest* Model 2522W
2 Bedroom • 1 Bath • Floor Size 694 sq. ft.



The Omaha

Model 2562U

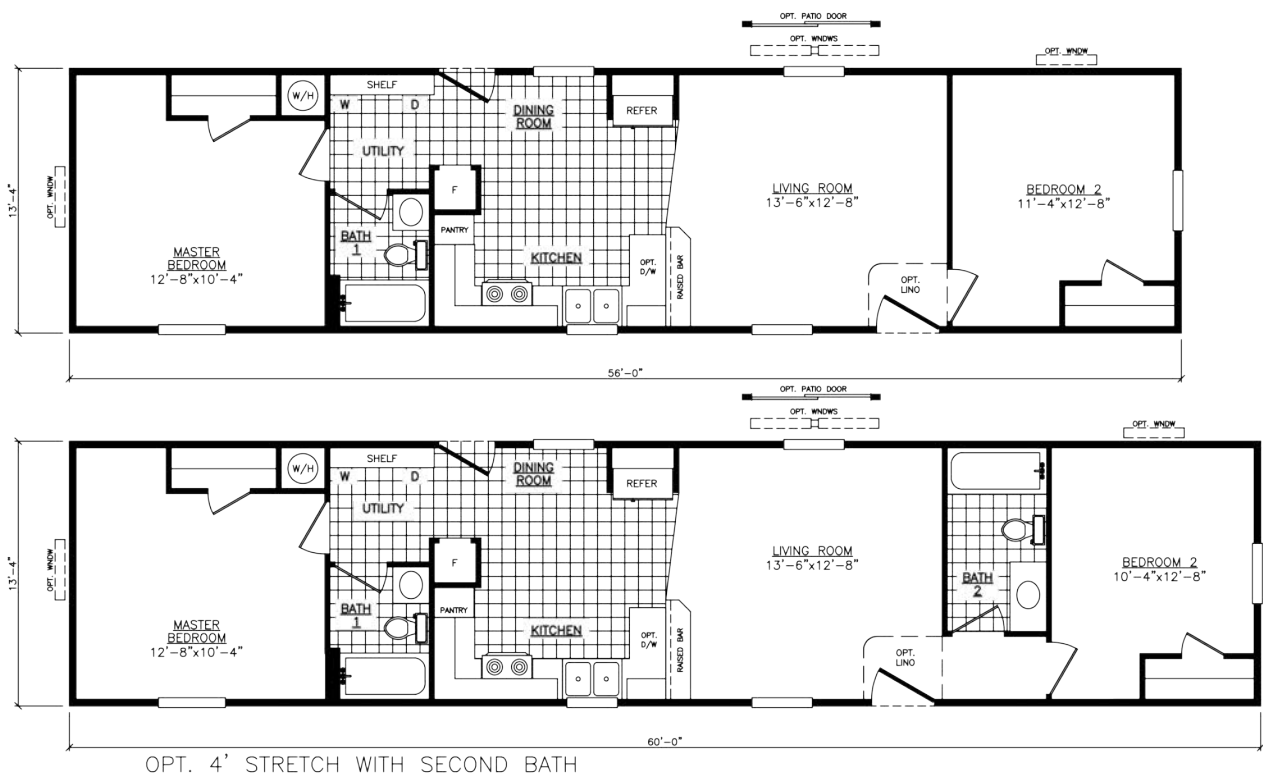
2 Bedroom • 2 Bath • Floor Size 747 sq. ft.



The Totem

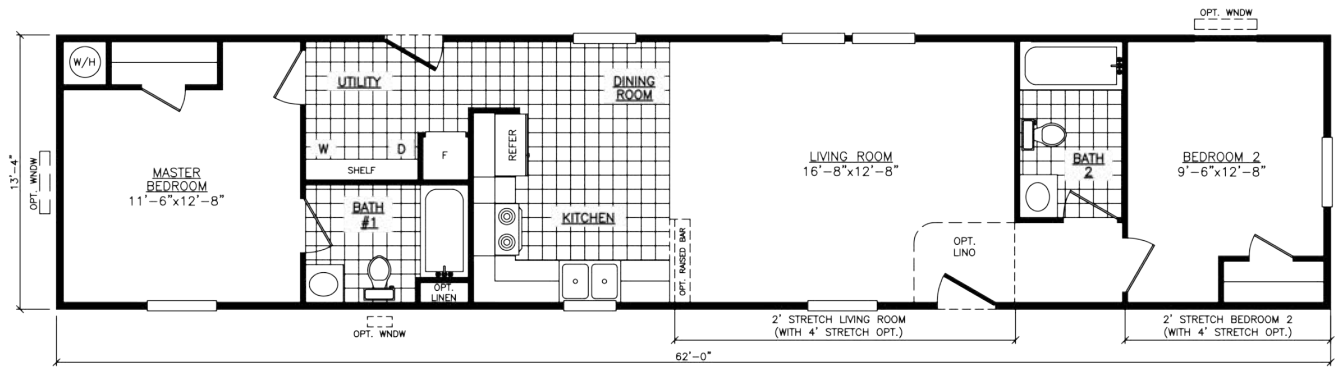
Model 2562Z

2 Bedroom • 1 Bath • Floor Size 747 sq. ft.

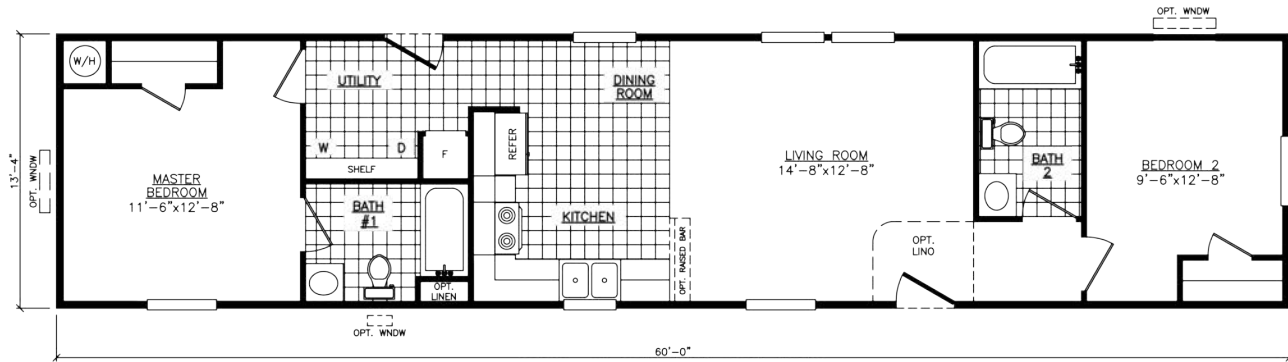


The *Madison*

Model 2622X
2 Bedroom • 2 Bath • Floor Size 827 sq. ft.



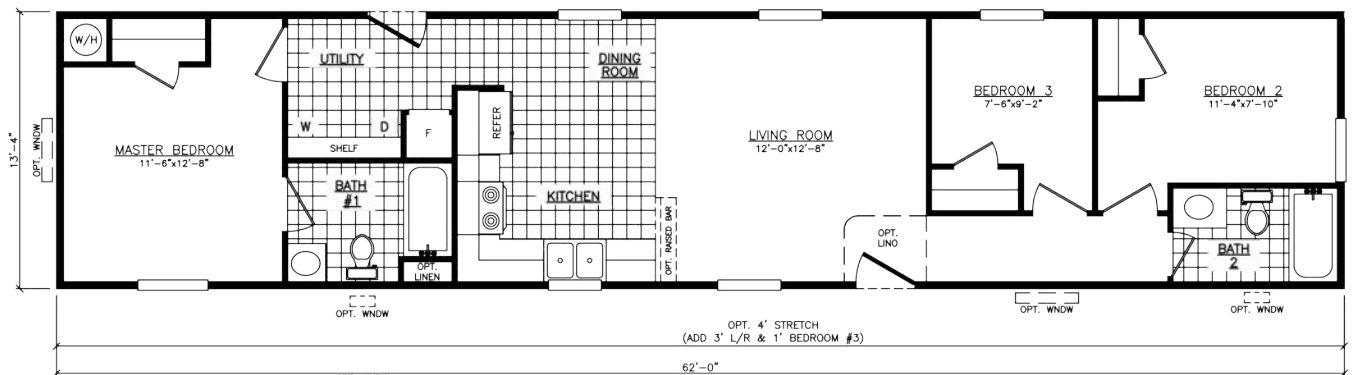
*AVAILABLE WITH REVERSE AISLE



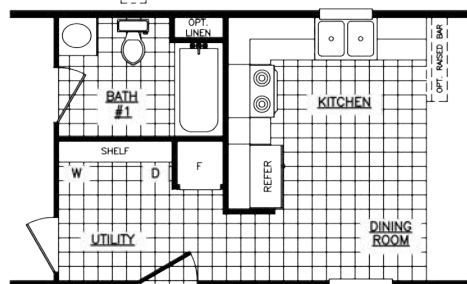
OPT. 2' SHRINK 60' BOX

The *Prairie*

Model 2623X
3 Bedroom • 2 Bath • Floor Size 827 sq. ft.



OPT. 4' STRETCH
(ADD 3' L/R & 1' BEDROOM #3)



OPT. REVERSE AISLE

OPT. 2' SHRINK AVAILABLE
(SUBTRACT 1' LIVING ROOM, 6" BEDROOM 2 & 6" BEDROOM 3 WITH SHRINK)

The *Timberland* Model 2663B
3 Bedroom • 2 Bath • Floor Size 880 sq. ft.

The *Timberland* Model 2663B
3 Bedroom • 2 Bath • Floor Size 880 sq. ft.



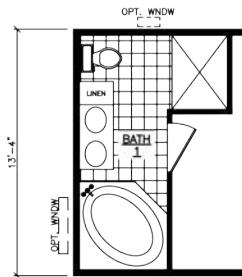
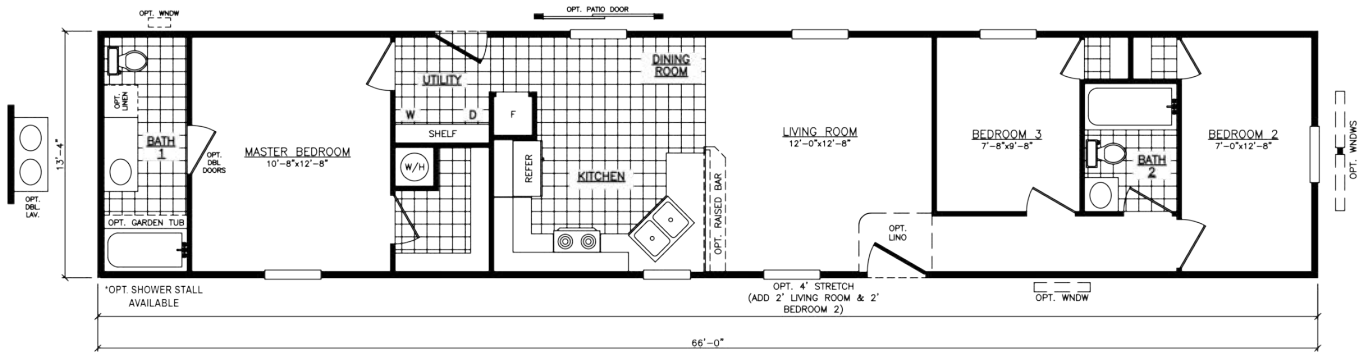
The *Morrison* Model 2663F
3 Bedroom • 2 Bath • Floor Size 880 sq. ft.

The *Morrison* Model 2663F
3 Bedroom • 2 Bath • Floor Size 880 sq. ft.

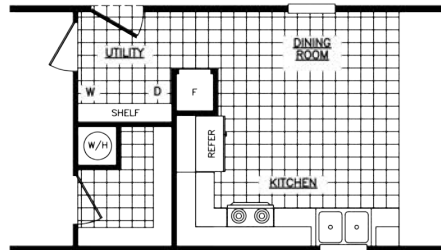


The *Telton*

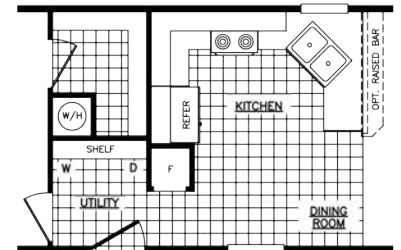
Model 2663W
3 Bedroom • 2 Bath • Floor Size 880 sq. ft.



OPT. GLAMOUR BATH



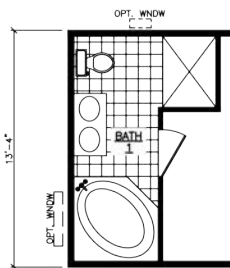
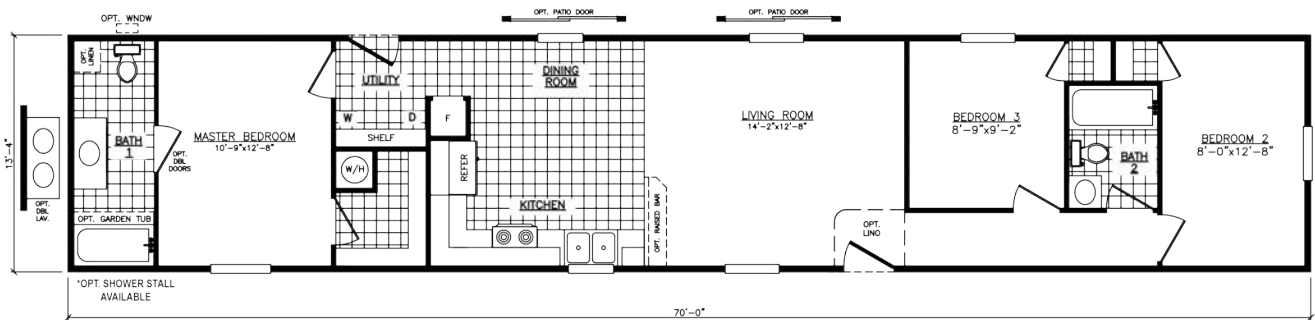
ALTERNATE KITCHEN



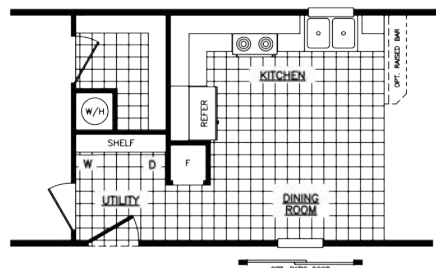
OPT. REVERSE AISLE

The *Riverview*

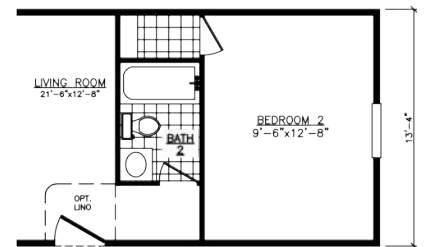
Model 2703D
3 Bedroom • 2 Bath • Floor Size 934 sq. ft.



OPT. GLAMOUR BATH



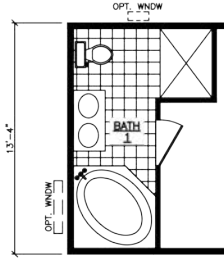
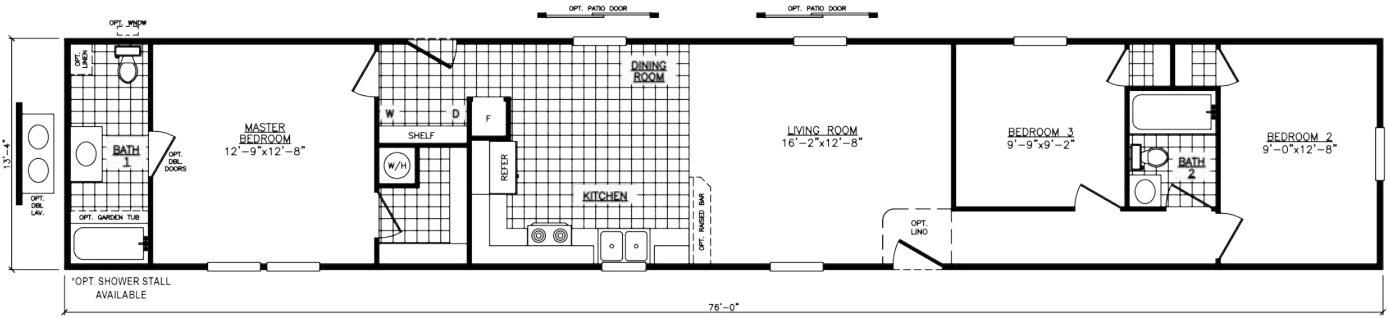
OPT. REVERSE AISLE



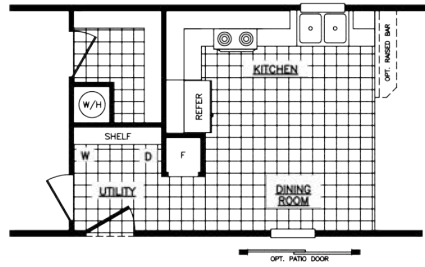
OPT. 2 BEDROOM

The *Sterling*

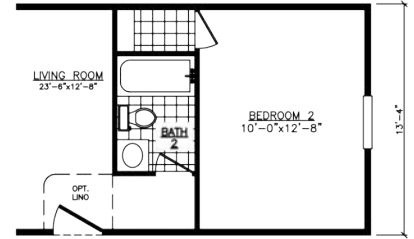
Model 2763D
3 Bedroom • 2 Bath • Floor Size 1,014 sq. ft.



OPT. GLAMOUR BATH



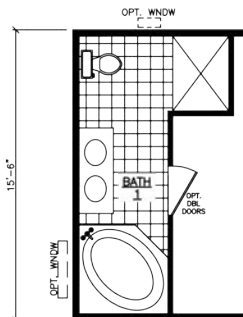
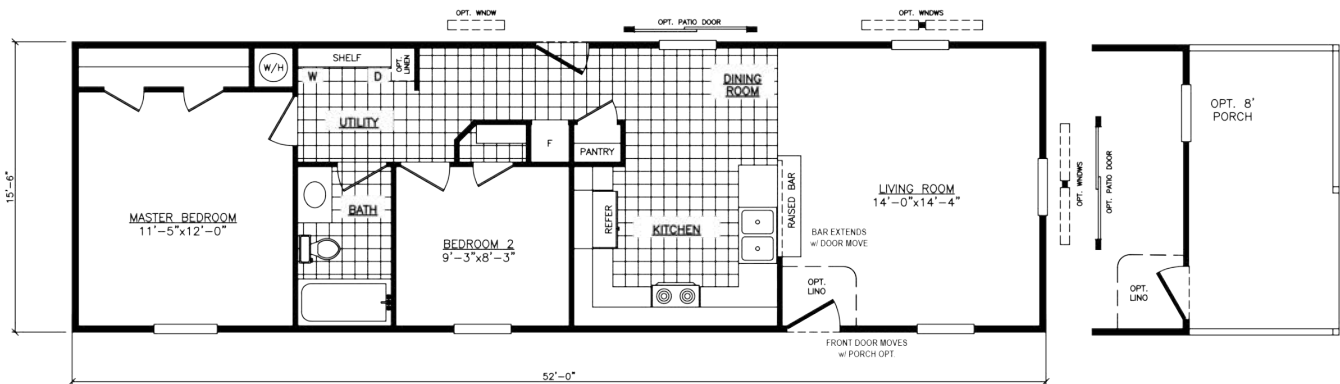
OPT. REVERSE AISLE



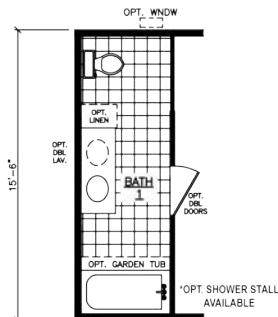
OPT. 2 BEDROOM

The *Vista*

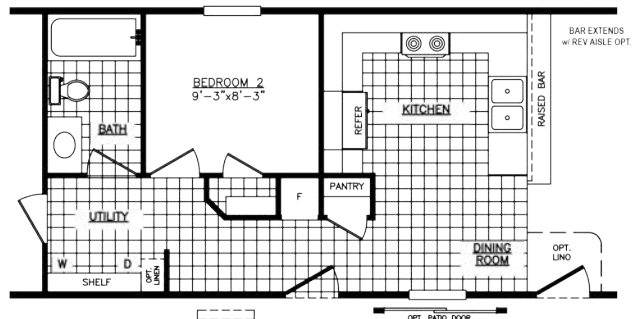
Model 6522W
2 Bedroom • 1 Bath • Floor Size 806 sq. ft.



OPT. GLAMOUR BATH
WITH OPT. 4' STRETCH
(INCLUDES -1' LIVING ROOM)



OPT. 2ND BATH
WITH OPT. 4' STRETCH
(INCLUDES -1' LIVING ROOM)



OPT. REVERSE AISLE

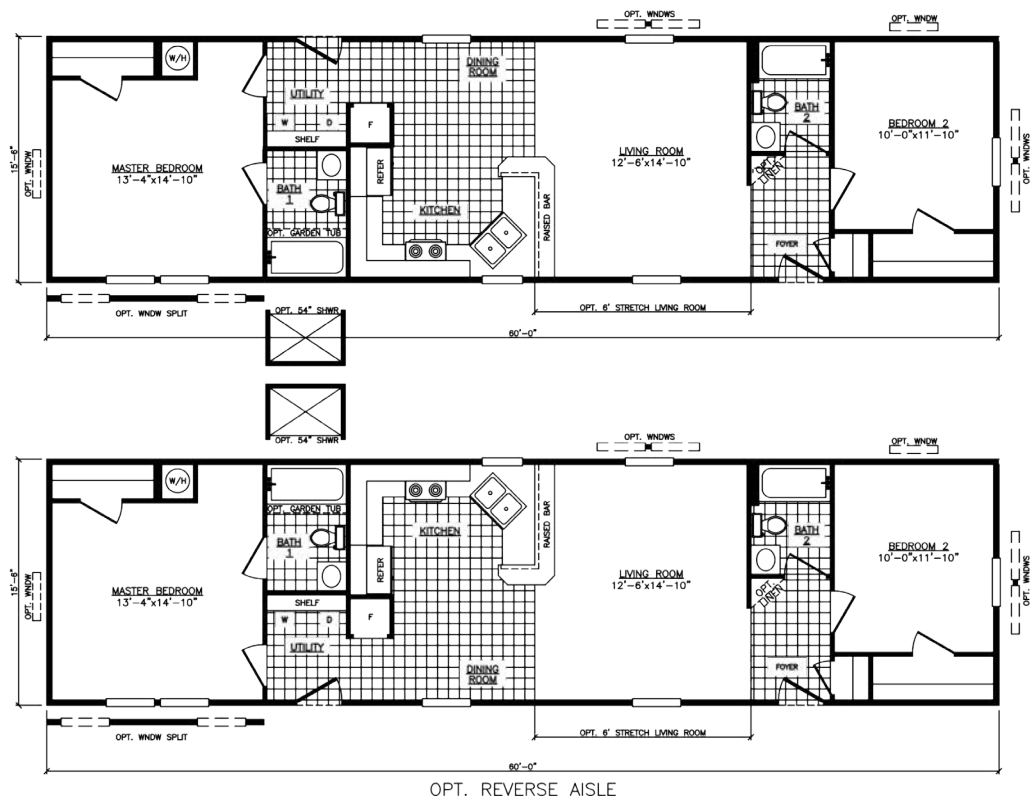
The *Pikeville*

Model 6562N
2 Bedroom • 2 Bath • Floor Size 868 sq. ft.



The *Tippecanoe*

Model 1660-2
2 Bedroom • 2 Bath • Floor Size 930 sq. ft.



The Conestoga

Model 6603U

3 Bedroom • 2 Bath • Floor Size 930 sq. ft.



The Senoran

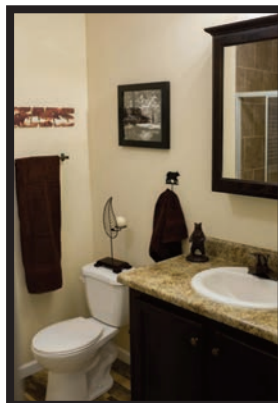
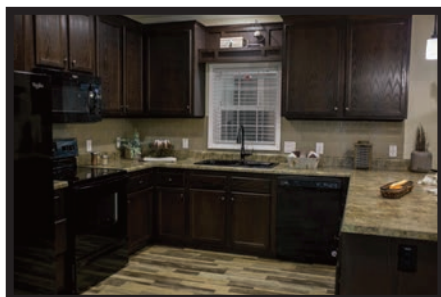
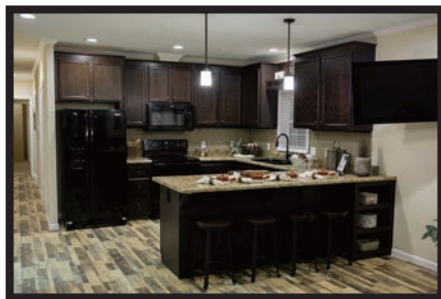
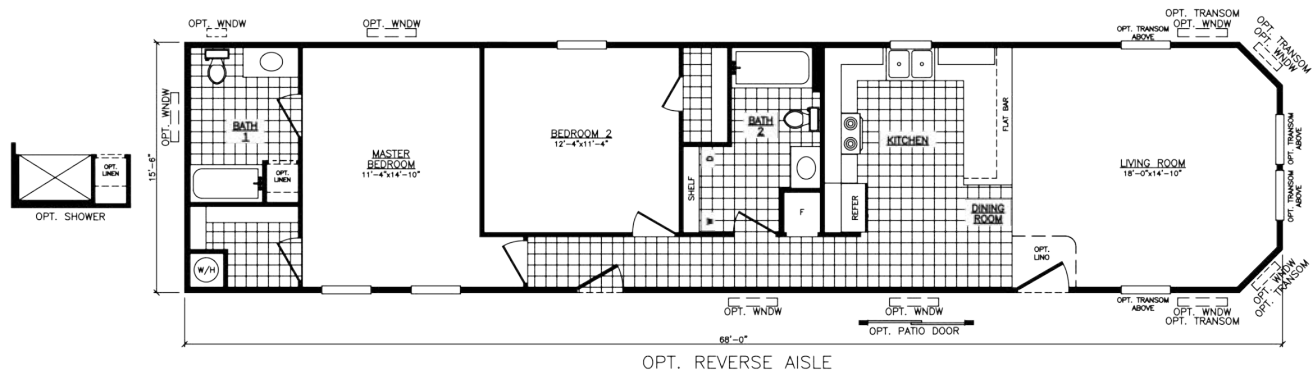
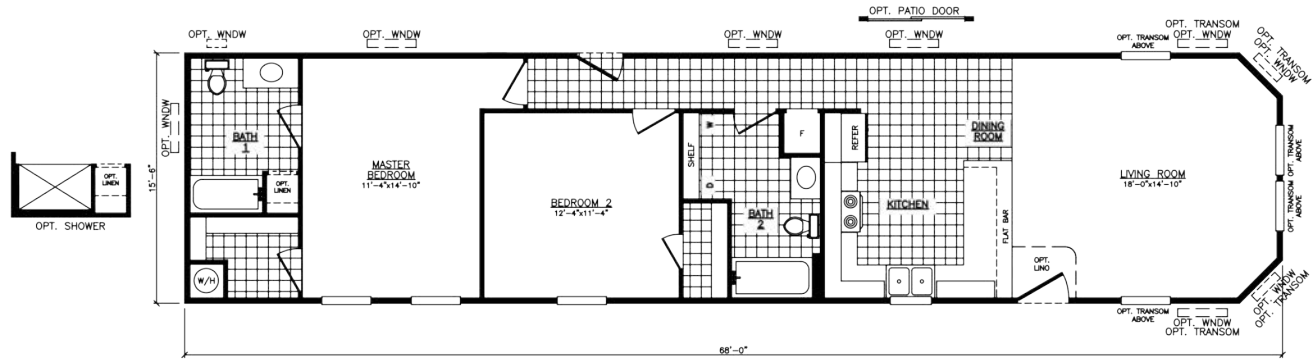
Model 6663X

3 Bedroom • 2 Bath • Floor Size 1,023 sq. ft.



The *Hudson* Model 6682S
2 Bedroom • 2 Bath • Floor Size 1,054 sq. ft.

The *Hudson* Model 6682S
2 Bedroom • 2 Bath • Floor Size 1,054 sq. ft.



Model 6683L
3 Bedroom • 2 Bath • Floor Size 1,054 sq. ft.

Model 6683L

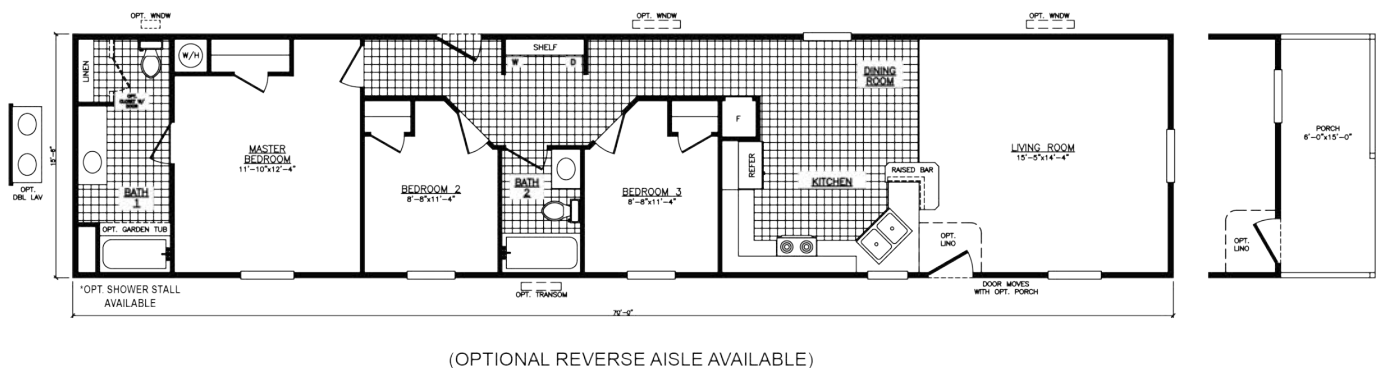
3 Bedroom • 2 Bath • Floor Size 1,054 sq. ft.



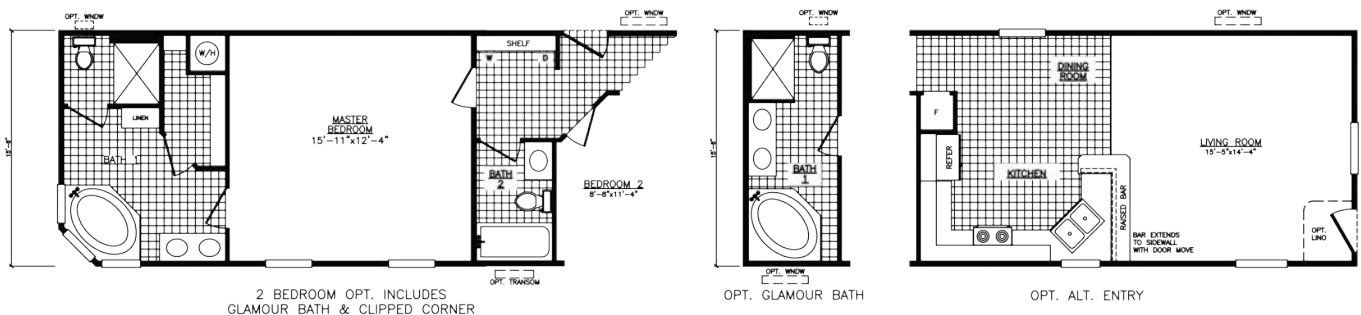
The *Winchester*

Model 6703F

3 Bedroom • 2 Bath • Floor Size 1,085 sq. ft.

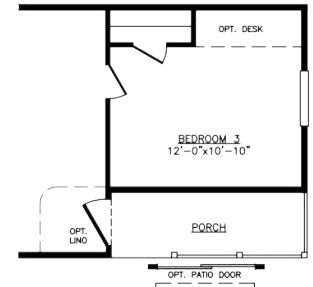
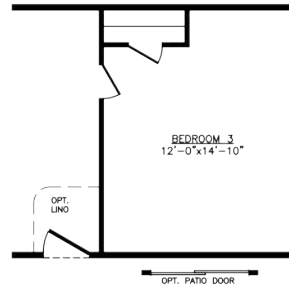
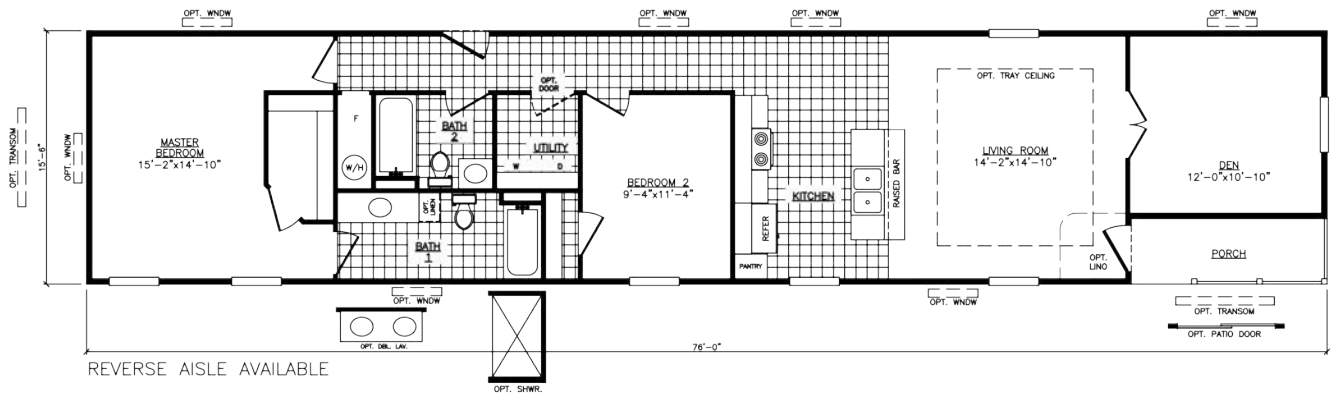


(OPTIONAL REVERSE AISLE AVAILABLE)



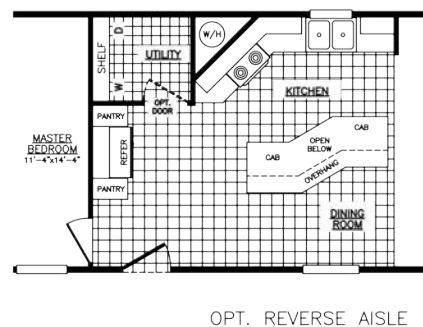
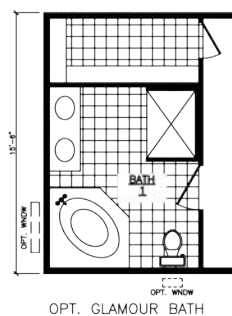
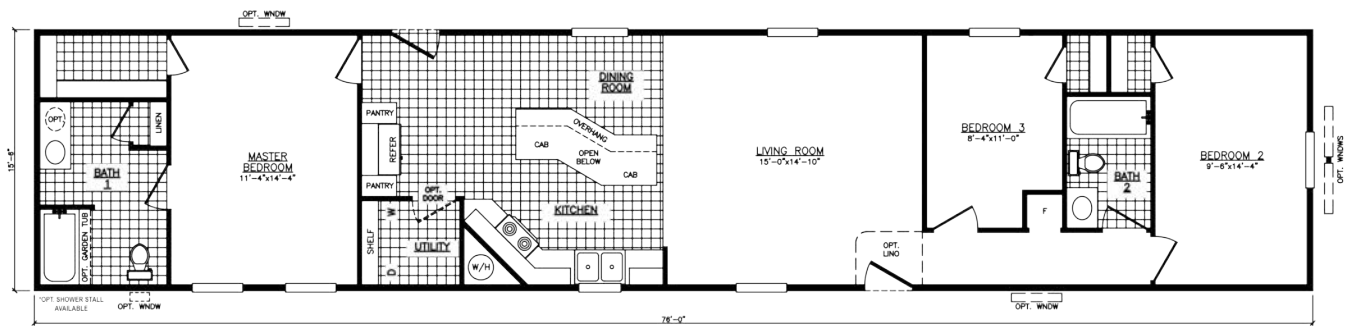
The *Westgate*

Model 6762L
2 Bedroom • 2 Bath • Floor Size 1,178 sq. ft.



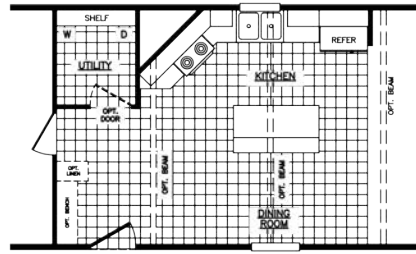
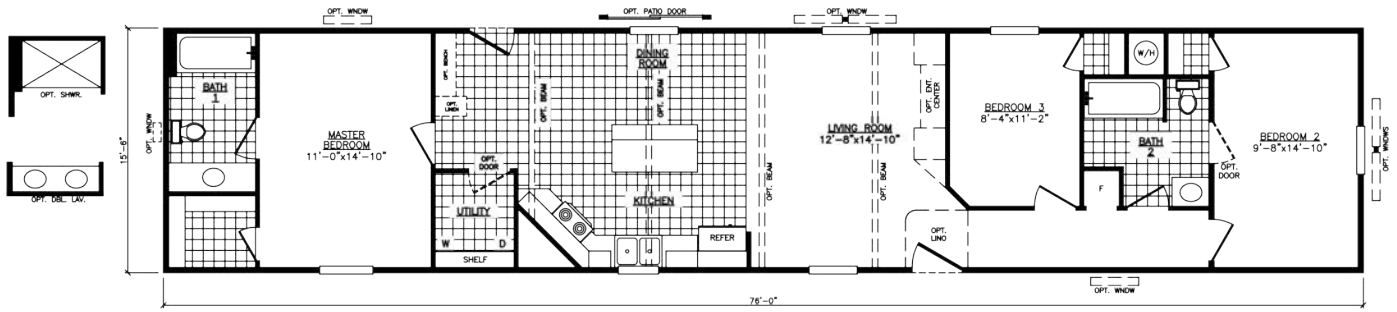
The *Southwest*

Model 1676-2
3 Bedroom • 2 Bath • Floor Size 1,178 sq. ft.



The *Landmark*

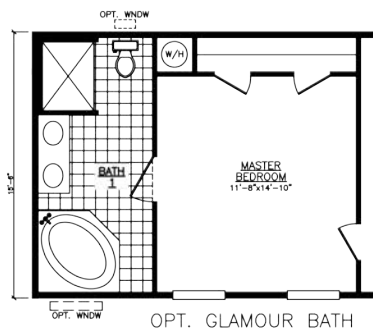
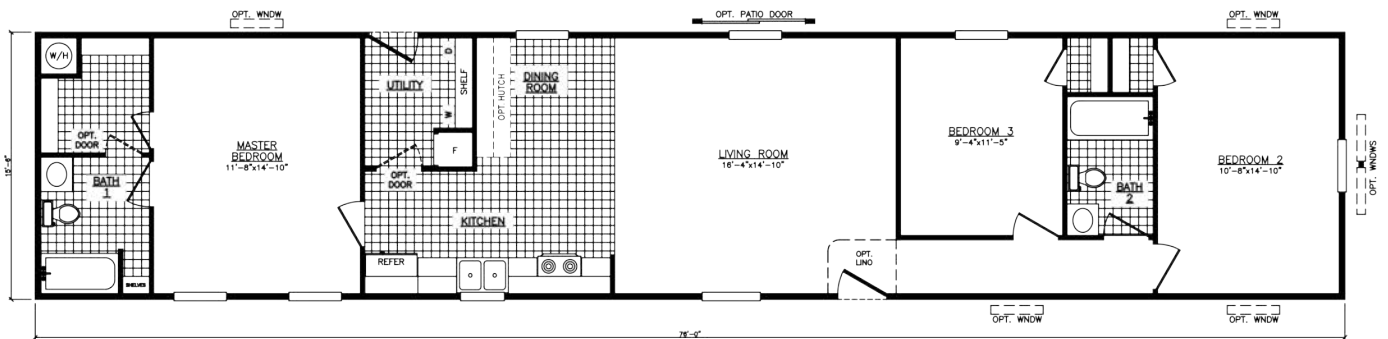
Model 6763AA
3 Bedroom • 2 Bath • Floor Size 1,178 sq. ft.



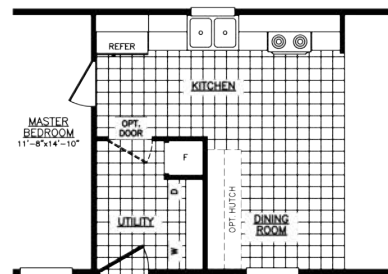
OPT. REVERSE AISLE

The *Melody*

Model 6763B
3 Bedroom • 2 Bath • Floor Size 1,178 sq. ft.



OPT. GLAMOUR BATH



OPT. REVERSE AISLE

The *Biscayne*

Model 6763G
3 Bedroom • 2 Bath • Floor Size 1,178 sq. ft.



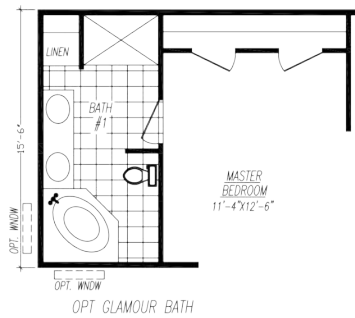
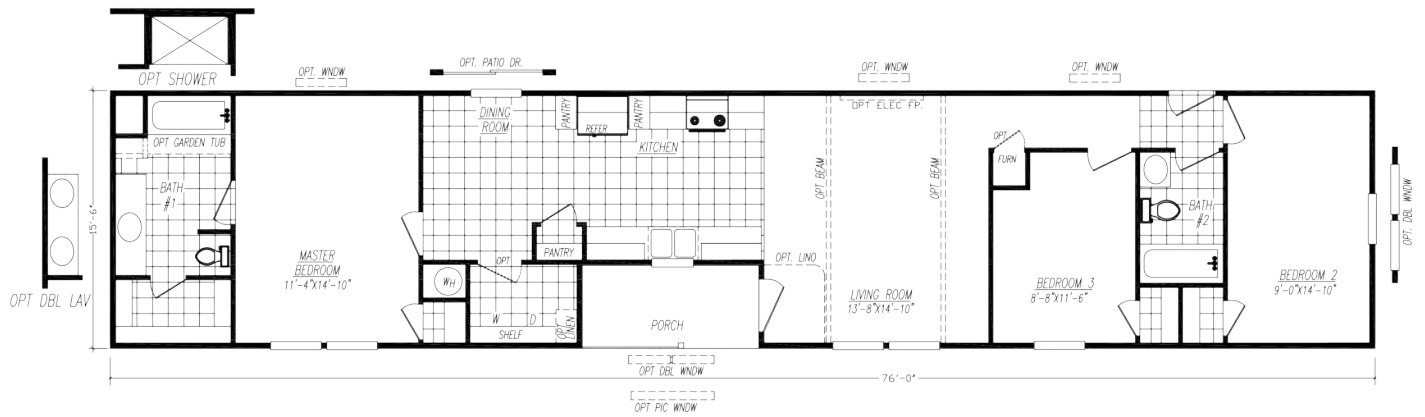
The *Phoenix*

Model 6763H
3 Bedroom • 2 Bath • Floor Size 1,178 sq. ft.



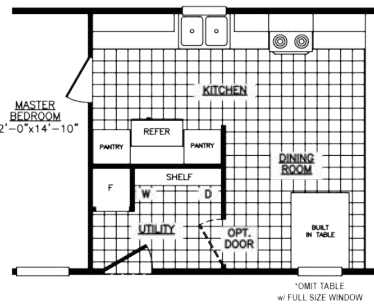
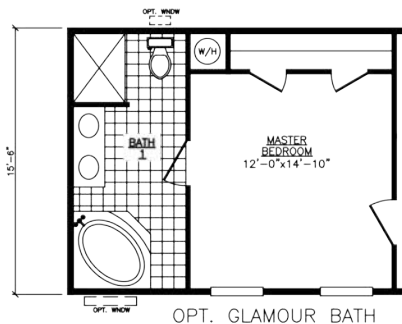
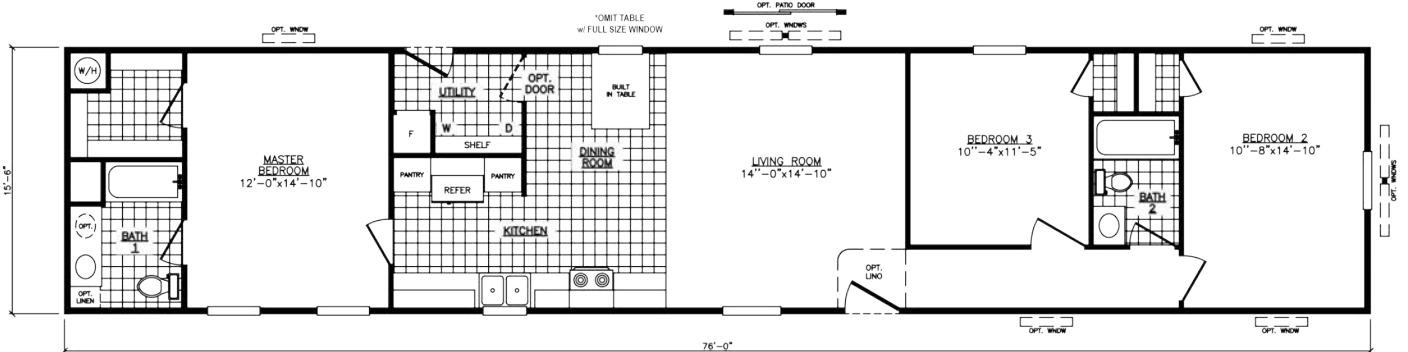
The Reynolds

Model 6763L
3 Bedroom • 2 Bath • Floor Size 1,178 sq. ft.



The Convoy

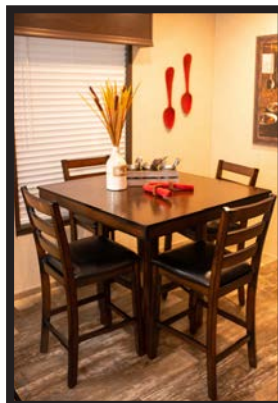
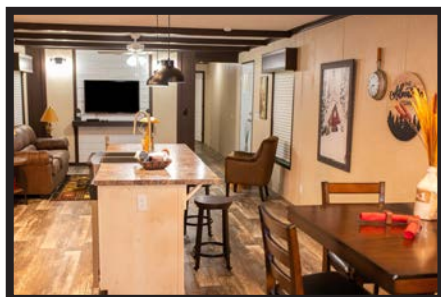
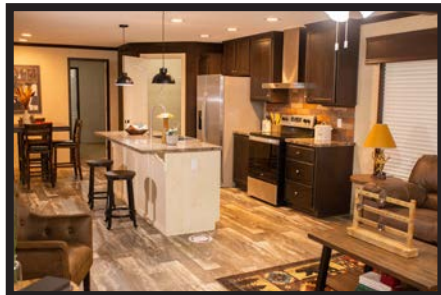
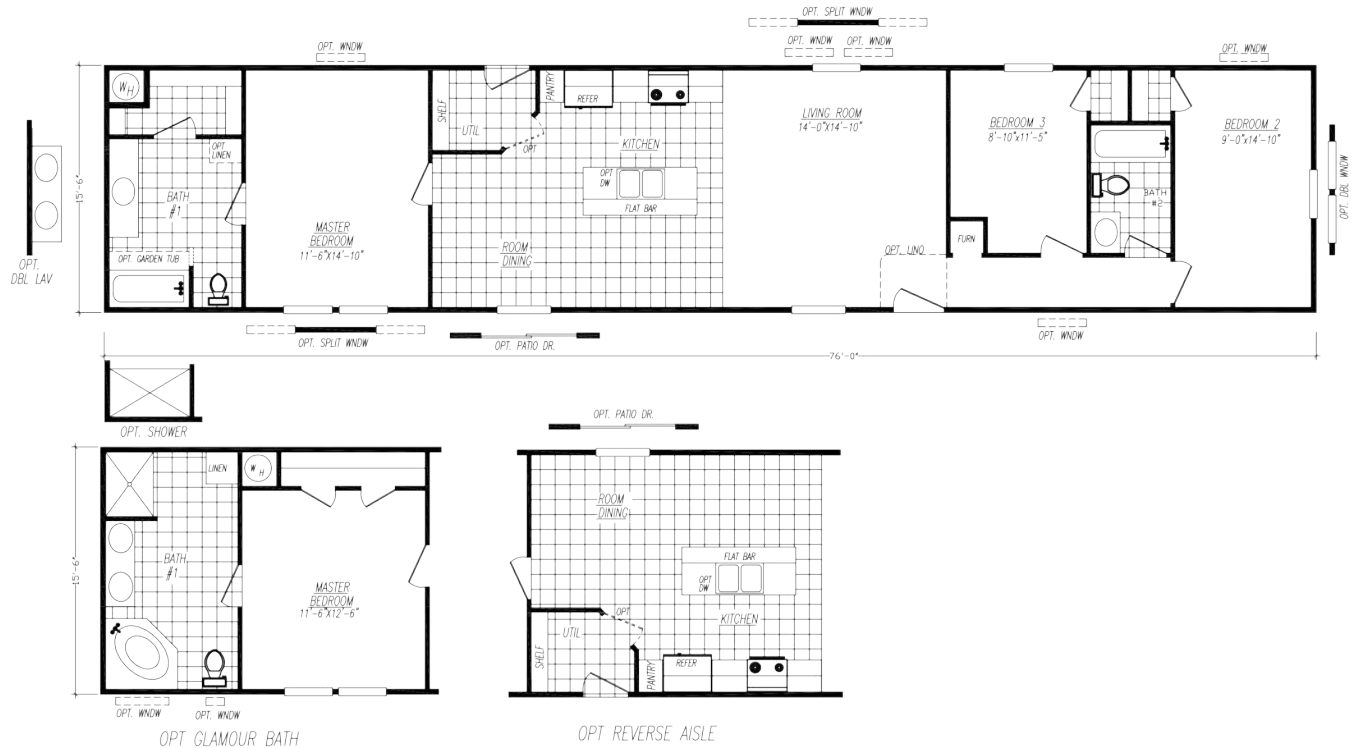
Model 6763R
3 Bedroom • 2 Bath • Floor Size 1,178 sq. ft.



OPT. REVERSE AISLE

The Farmstead

Model 6763V
3 Bedroom • 2 Bath • Floor Size 1,178 sq. ft.



The *Independence* 3 Bedroom • 2 Bath • Floor Size 1,178 sq. ft. Model 6763X

The *Independence* 3 Bedroom • 2 Bath • Floor Size 1,178 sq. ft. Model 6763X

The *Independence* 3 Bedroom • 2 Bath • Floor Size 1,178 sq. ft. Model 6763X



The *Roosevelt* Model 6764X
4 Bedroom • 2 Bath • Floor Size 1,178 sq. ft.

The *Roosevelt* Model 6764X
4 Bedroom • 2 Bath • Floor Size 1,178 sq. ft.

The *Roosevelt* Model 6764X
4 Bedroom • 2 Bath • Floor Size 1,178 sq. ft.



Mojave Series

Standard Features

Exterior

Thermal Zone III Construction
Nominal 3/12 Roof Pitch
R-28-11-11 Insulation
(Additional Windows & Doors May Require Higher Insulation Values)
Vinyl Siding
7/16" OSB Wrap under Vinyl Siding
Housewrap w/ Window Tape
3-Tab Fiberglass Shingles w/ Water & Ice Shield
7/16" OSB Roof Sheathing
Dead Bolt Locks at Front and Rear (Keyed Alike)
Vinyl Single Hung Gridless Windows - Low "E" w/ Argon
Foam All Exterior Windows
38"x82" R.O. 6 Panel Residential Front Door (No Storm)
34"x82" R.O. 6 Panel Residential Rear Door (No Storm)
2x6 Floor Joists 16" O.C. (12', 14', 24' & 28' Wides)
2x8 Floor Joists 16" O.C. (16' & 32' Wides)
20 LB Roof Load
2x4 Exterior Walls 16" O.C.
Raised Panel Shutters at FDS & Hitch (Single)
Raised Panel Shutters at FDS Only (Sectional)
Light Fixtures at All Exterior Doors
Full Length Chassis w/ Outriggers
99.5" I-Beam Spread & Detachable Hitch

Interior

Customer Choice Decor Selections
2" Plastic Mini-Blinds Throughout
Door Stop All 3 Sides
94" Flat Ceilings
Stomp Textured Ceiling
OSB Tongue & Groove Floor Decking
Vinyl Wall Panels Throughout
Flat Wrapped Moldings Throughout
25oz. Plush Carpet
1/2" Rebond Carpet Pad
Vinyl Flooring
Wire Closet Shelving
2 Panel White Interior Doors Throughout
Mortised Interior Door Hinges

Electrical, Plumbing, & Heating

Smoke Detectors in Main Living Areas
& All Bedrooms
200 AMP Service w/ Electric Furnace
40 Gallon Electric Water Heater
(1) Exterior Faucet (FDS)
(1) Exterior Electrical Receptacle (FDS)
Copper Wiring & PEX Plumbing
Whole House Shut-off Valve near Water Heater
Water Shut-off Valves (All Sinks & Commodes)
Metal Heat Ducts
GFI Receptacles in Kitchen and Baths
Ceiling Lights Throughout
Plumb & Wire for Washer & Dryer
Wire Shelf above Washer & Dryer

Kitchen

Black Electric Coil Top Range
Black 18cf Refrigerator
Black 30" Power Range Hood
30" Overhead Cabinets w/ Fixed Center Shelves
Shaker Style MDF Wrapped Cabinet Doors & Stiles
Concealed Cabinet Door Hinges
Dovetail Drawers Throughout
(1) Bank of Drawers w/ Residential Rails & Guides
Laminated Countertops
Stainless Steel Kitchen Sink
Nickel Gooseneck Faucet w/ Pulldown Sprayer
Cabinet over Range & Shelf over Refrigerator

Bath

1pc Tub & Shower Combo (Bath #1 - Single Section)
1pc 54" Shower Stall (Bath #1 - Sectional)
1pc Tub & Shower Combo (Additional Bathrooms)
Laminated Countertops
Mirror above Each Bathroom Sink
Power Exhaust Fans in Bathroom(s)
China Raised & Elongated Commode in Bathroom(s)
White Oval China Sink(s) w/ Single Lever Faucet(s)

**Because of continuous product improvements, specifications
are subject to change without notice or obligation.**

ADVENTURE HOMES

www.AdventureHomes.net

1119 Fuller Drive, Garrett, IN 46738

877-510-1955



January
2025