

2025



# The Lakeside

Cottage Series



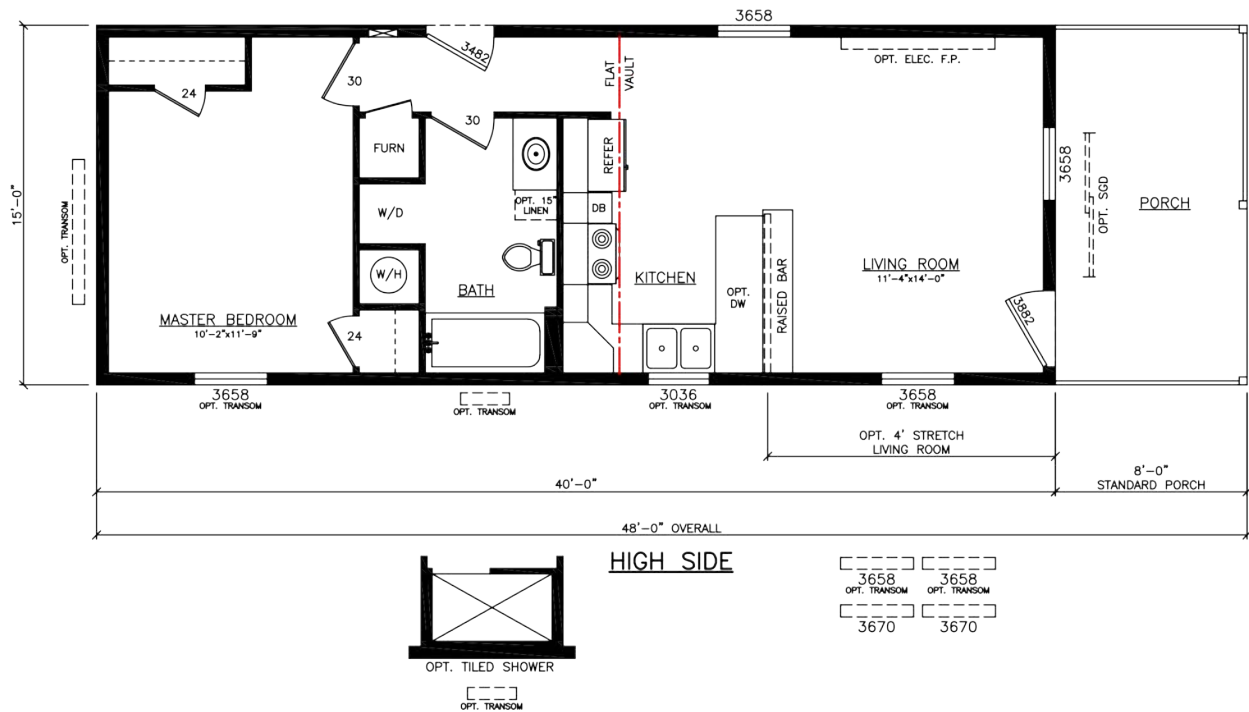
ADVENTURE  
HOMES

DREAM IT. DESIGN IT. BUILD IT. LOVE IT.



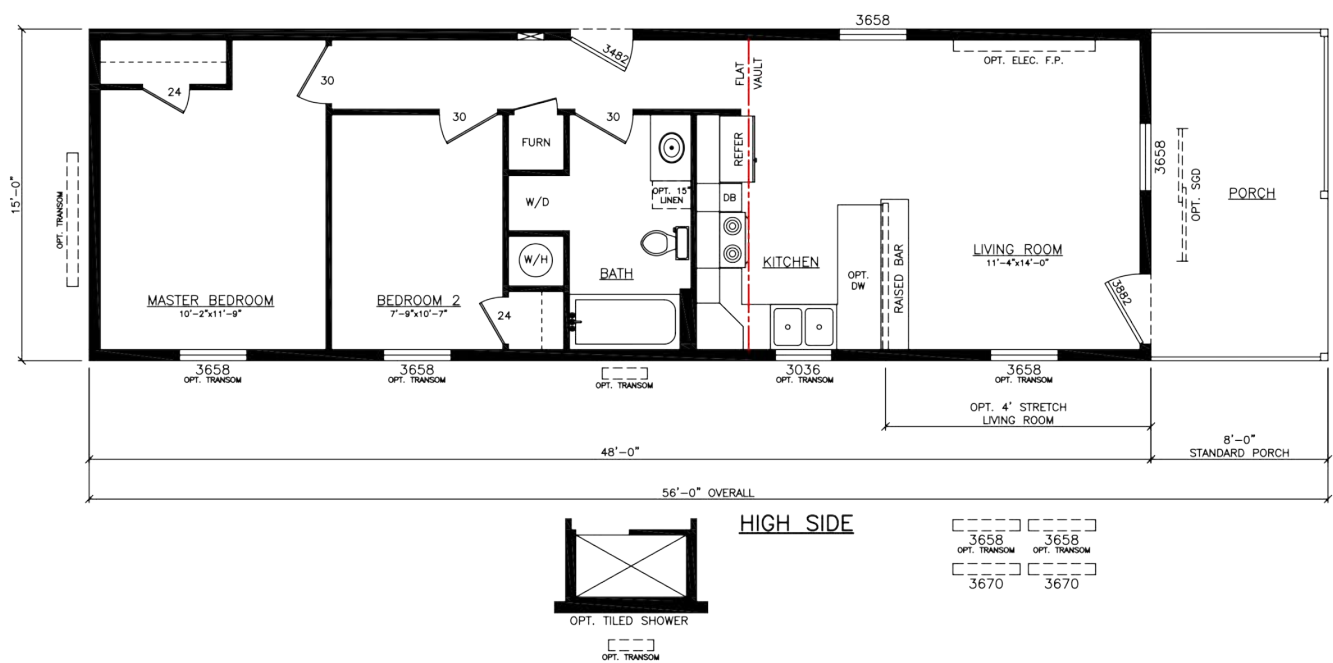
# Model 6481LS - Standard Version

1 Bedroom • 1 Bath • Floor Size 600 sq. ft.



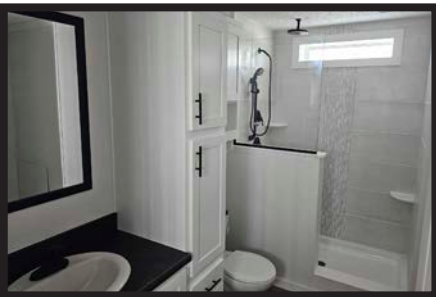
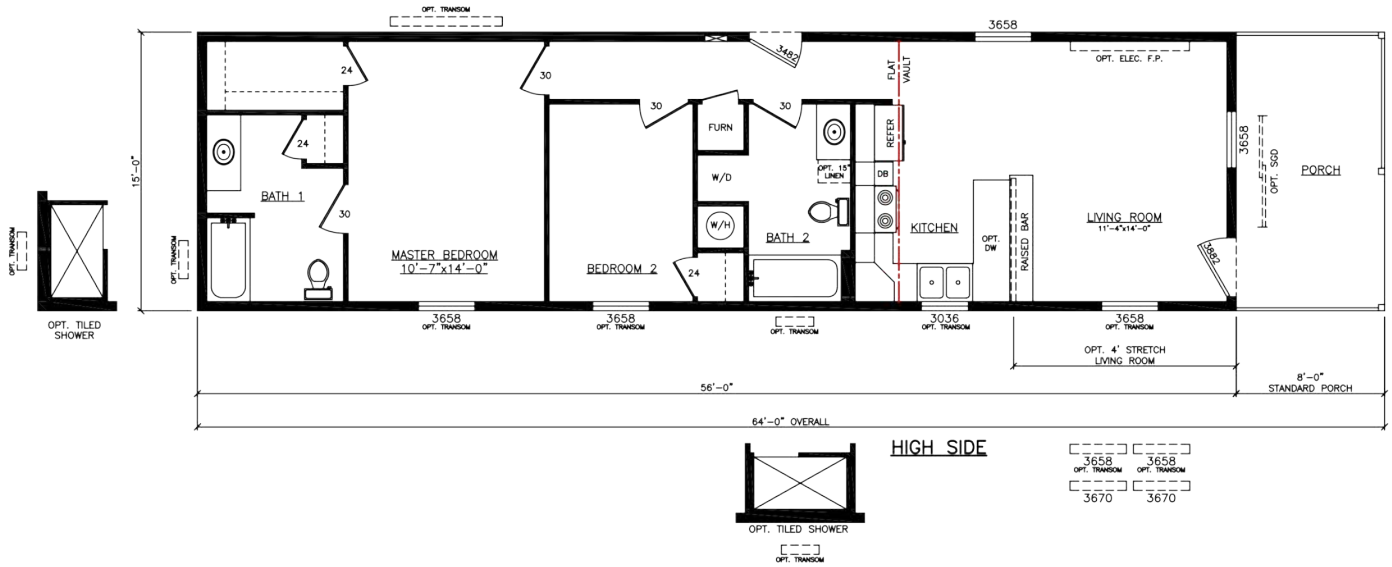
## Model 6481LS - 8' Stretch

2 Bedroom • 1 Bath • Floor Size 720 sq. ft.



## Model 6481LS - 16' Stretch

2 Bedroom • 2 Bath • Floor Size 840 sq. ft.





# Lakeside Series

## Standard Features

### Exterior

Thermal Zone III Construction  
Nominal 3/12 "Shed" Roof Pitch  
R-28-11-11 Insulation  
(Additional Windows & Doors May Require Higher Insulation Values)  
LP Smartside Siding  
LP Smartside Corners & Lineals (All Doors & Windows)  
(Match Exterior Siding Color)  
7/16" OSB Wrap under LP Smartside Siding  
Housewrap w/ Window Tape  
26 Gauge Residential Metal Roof  
7/16" OSB Roof Sheathing  
Dead Bolt Locks at Front and Rear (Keyed Alike)  
Vinyl Single Hung Gridless Windows - Low "E" w/ Argon  
Foam All Exterior Windows  
38"x 82" R.O. 6 Panel Residential Front Door (No Storm)  
34"x 82" R.O. 6 Panel Residential Rear Door (No Storm)  
2x8 Floor Joists 16" O.C. (16' Wide)  
20 LB Roof Load  
2x4 Exterior Walls 16" O.C.  
Exterior Can Lights on Covered Porch  
Exterior Light Fixture at Rear Door  
Full Length Chassis w/ Outriggers  
99.5" I-Beam Spread & Detachable Hitch  
8' Covered Porch w/ Treated Lumber, Cedar Columns,  
Cedar Railings & Black Metal Spindles

### Interior

Customer Choice Decor Selections  
2" Plastic Mini-Blinds Throughout  
Door Stop All 3 Sides  
Vaulted Ceilings (Living Room & Kitchen)  
94" Flat Ceilings (Rest of Home)  
Stomp Textured Ceiling  
Coveless Drywall Ceilings in Vaulted Areas  
OSB Tongue & Groove Floor Decking  
1/2" Finished Drywall Throughout w/ VOG Closets  
Metal Furnace Door  
3" Stile MDF Trim Throughout  
Vinyl Flooring Throughout  
Wire Closet Shelving  
2 Panel White Interior Doors Throughout  
Mortised Interior Door Hinges

### Electrical, Plumbing & Heating

Smoke Detectors in Main Living Areas  
& All Bedrooms  
200 AMP Service w/ Electric Furnace  
40 Gallon Electric Water Heater  
(1) Exterior Faucet (RDS)  
(1) Exterior Electrical Receptacle (Porch)  
Copper Wiring & PEX Plumbing  
Whole House Shut-off Valve near Water Heater  
Water Shut-off Valves (All Sinks & Commodes)  
Metal Heat Ducts  
GFI Receptacles in Kitchen and Baths  
LED Can Lights Throughout  
(Includes Living Room)  
Plumb & Wire for Stackable Washer & Dryer

### Kitchen

Black Electric Coil Top Range  
Black 18cf Refrigerator  
Black 30" Power Range Hood  
30" Overhead Cabinets w/ Fixed Center Shelves  
Shaker Style MDF Wrapped Cabinet Doors & Stiles  
Concealed Cabinet Door Hinges  
Dovetail Drawers Throughout  
(1) Bank of Drawers w/ Residential Rails & Guides  
Laminated Countertops w/ 1"x4" Laminate Backsplash  
Stainless Steel Kitchen Sink  
Nickel Gooseneck Faucet w/ Pulldown Sprayer  
Cabinet over Range & Shelf over Refrigerator

### Bath

1pc Tub & Shower Combo  
(Bath #1 & Additional Bathrooms)  
Laminated Countertops w/ 1"x4" Laminate Backsplash  
Mirror above Each Bathroom Sink  
Power Exhaust Fan in Bathroom(s)  
China Raised & Elongated Commode in Bathroom(s)  
White Oval China Sink(s) w/ Single Lever Faucet(s)

**Because of continuous product improvements, specifications**  
are subject to change without notice or obligation.

## ADVENTURE HOMES

[www.AdventureHomes.net](http://www.AdventureHomes.net)

1119 Fuller Drive, Garrett, IN 46738

877-510-1955



January  
2025