

2025



The Kalahavi

Single & Sectional Series



**ADVENTURE
HOMES**

DREAM IT. DESIGN IT. BUILD IT. LOVE IT.

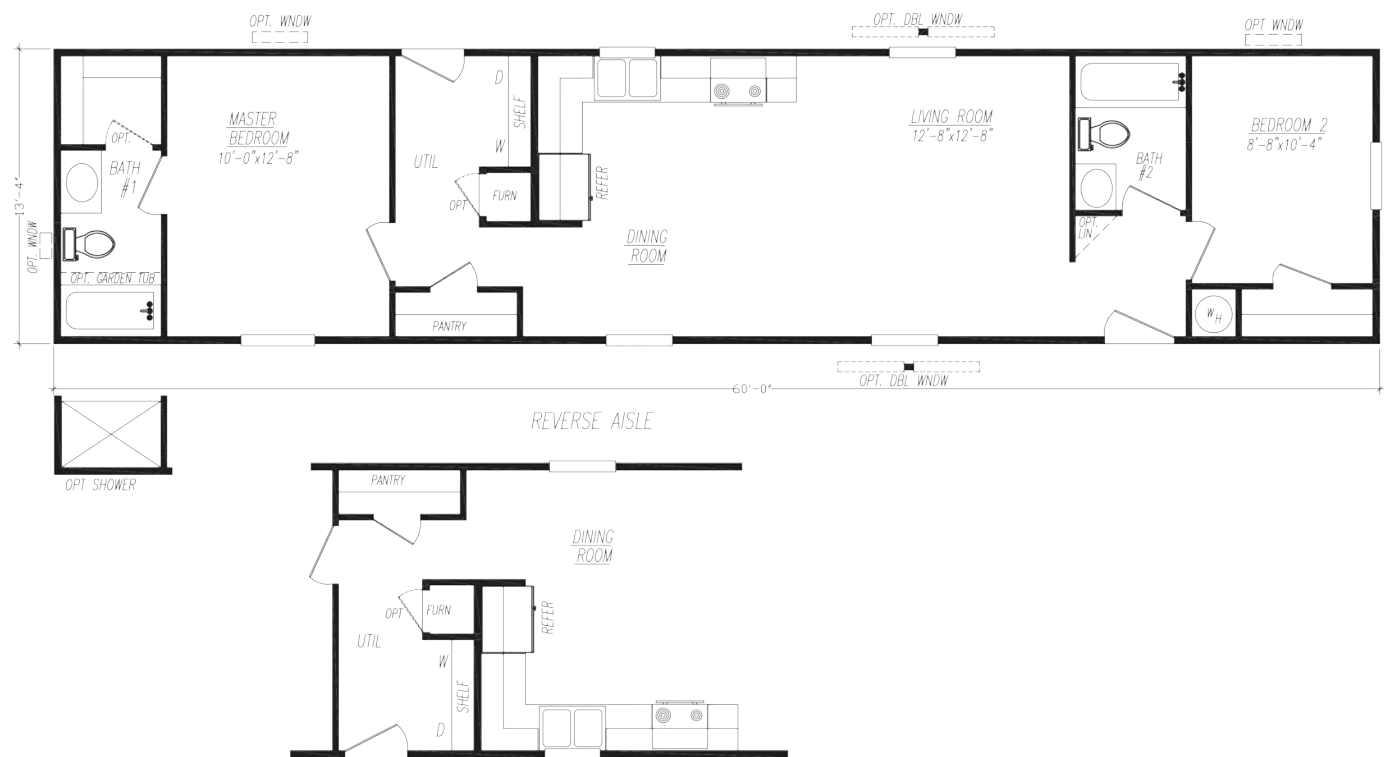
2 Bedroom • 1 Bath • Floor Size 747 sq. ft.

All homes built by Adventure meet, and in many cases exceed, federal HUD code.

Adventure Homes Kalahari Series is standard with Pre-Determined Interior Decor Choices.

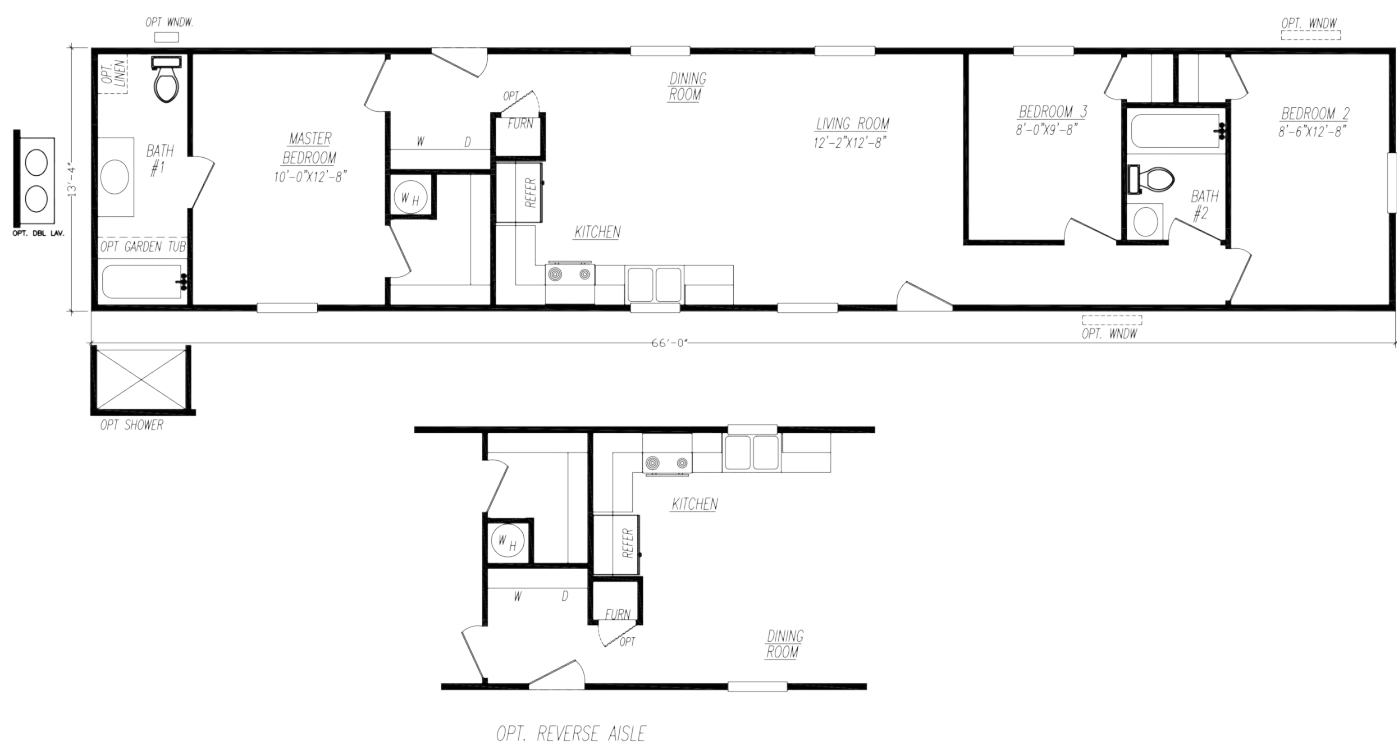
Model 2602A-KH

2 Bedroom • 2 Bath • Floor Size 800 sq. ft.



Model 2663F-KH

3 Bedroom • 2 Bath • Floor Size 880 sq. ft.



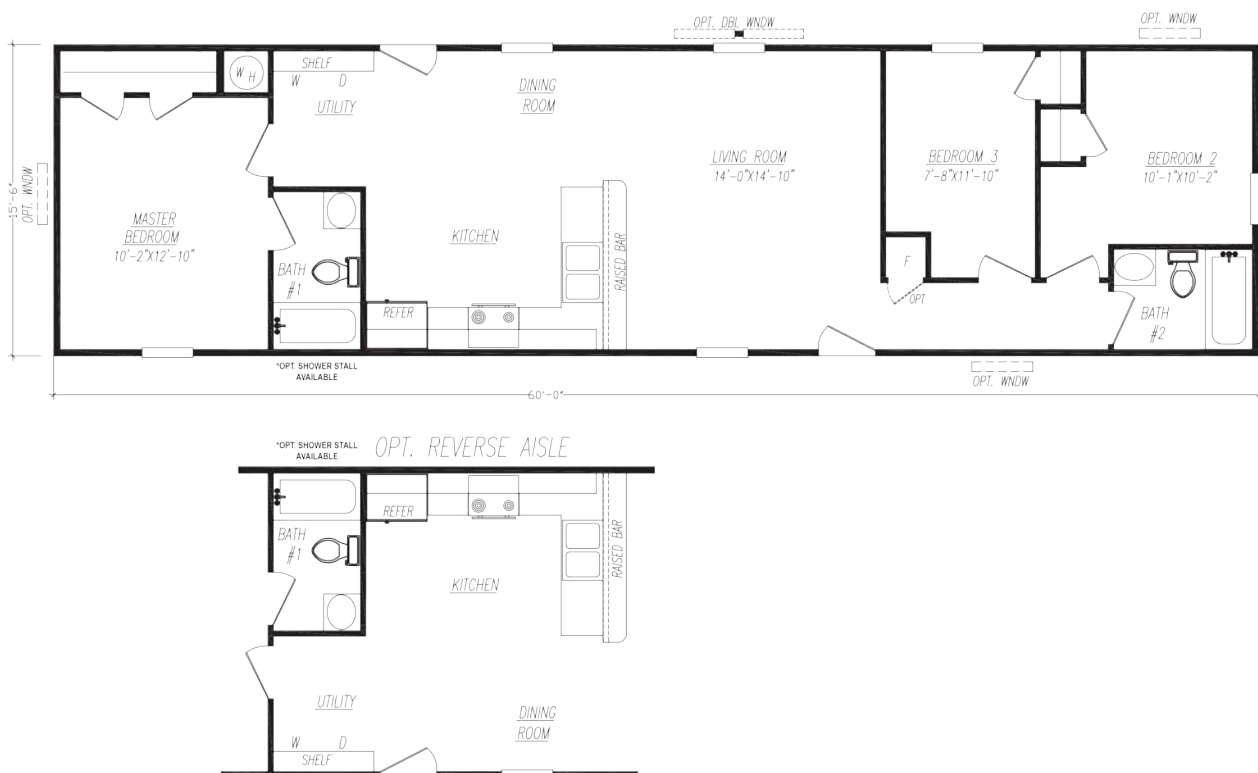
Model 2763D-KH 3 Bedroom • 2 Bath • Floor Size 1,014 sq. ft.

Model 2763D-KH 3 Bedroom • 2 Bath • Floor Size 1,014 sq. ft.



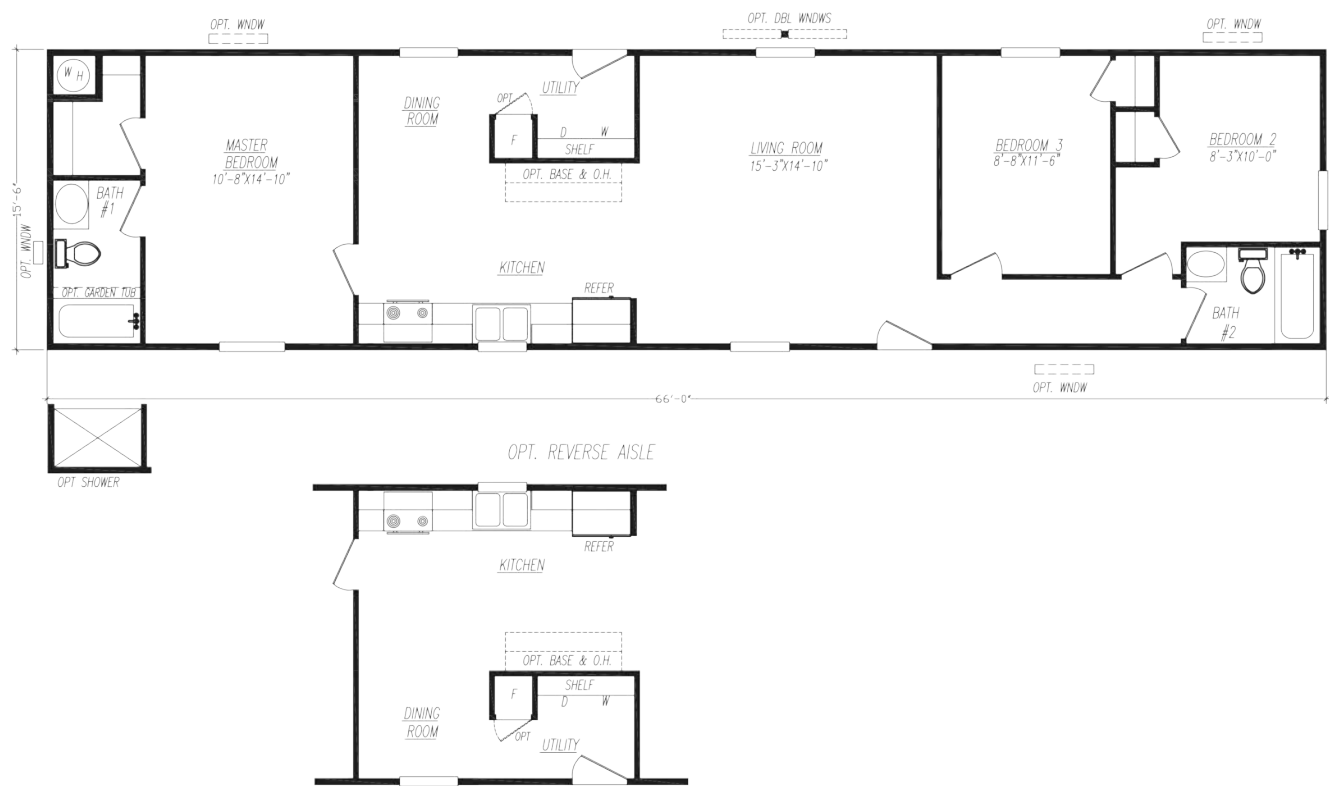
Model 6603U-KH 3 Bedroom • 2 Bath • Floor Size 930 sq. ft.

Model 6603U-KH 3 Bedroom • 2 Bath • Floor Size 930 sq. ft.



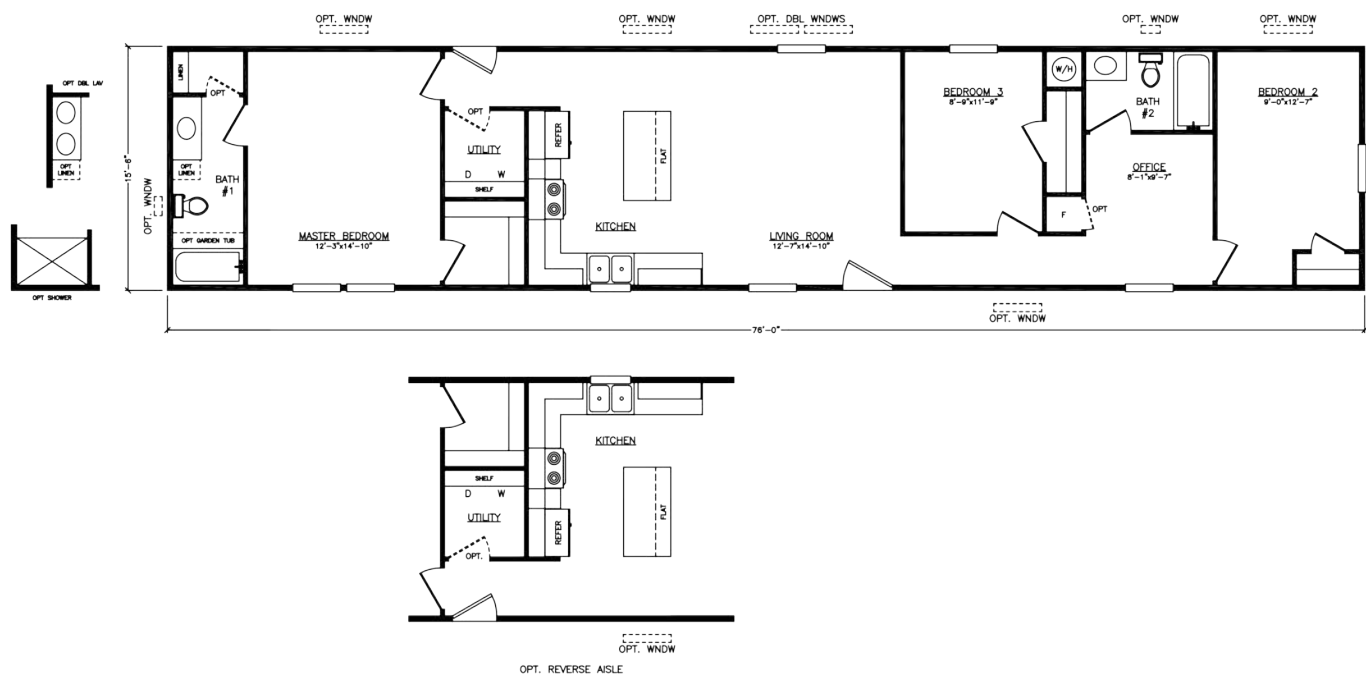
Model 6663X-KH

3 Bedroom • 2 Bath • Floor Size 1,023 sq. ft.



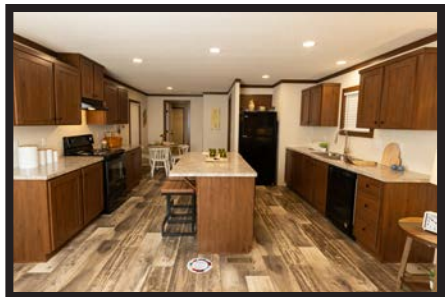
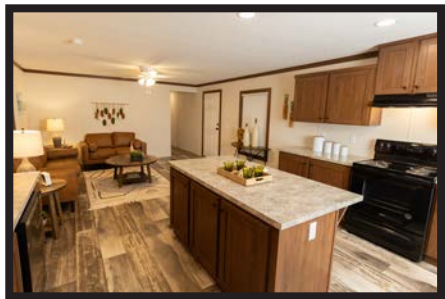
Model 6763D-KH

3 Bedroom • 2 Bath • Floor Size 1,178 sq. ft.



Model 6763M-KH

3 Bedroom • 2 Bath • Floor Size 1,178 sq. ft.



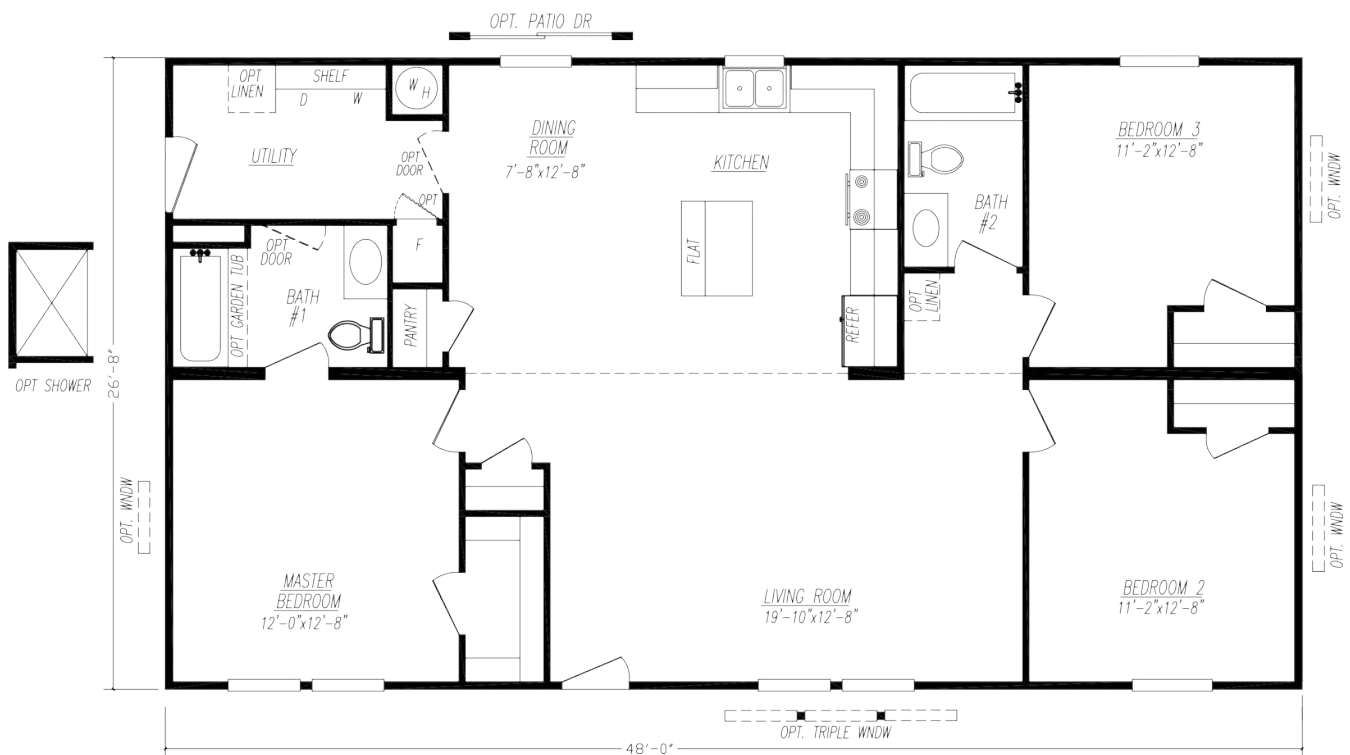
Model 4443X-KH

3 Bedroom • 2 Bath • Floor Size 1,174 sq. ft.



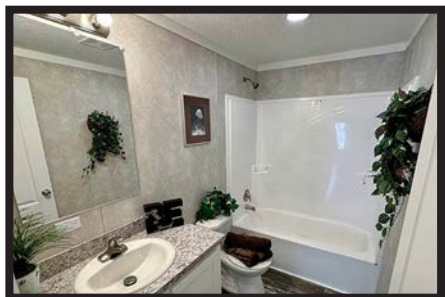
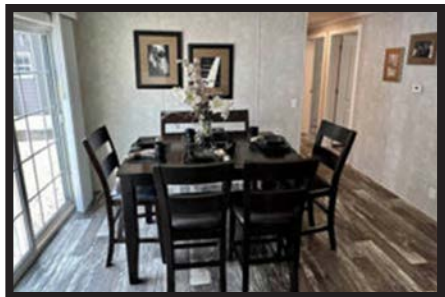
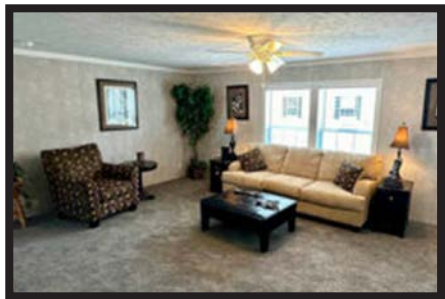
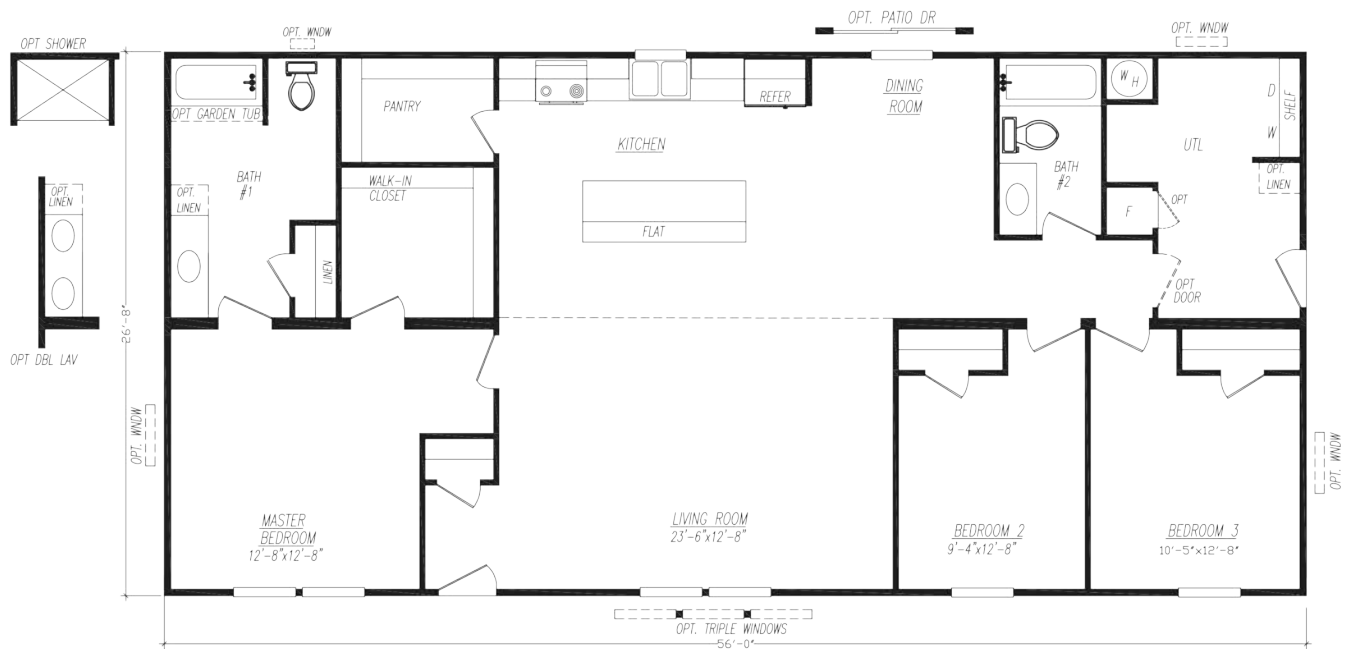
Model 4483M-KH

3 Bedroom • 2 Bath • Floor Size 1,280 sq. ft.



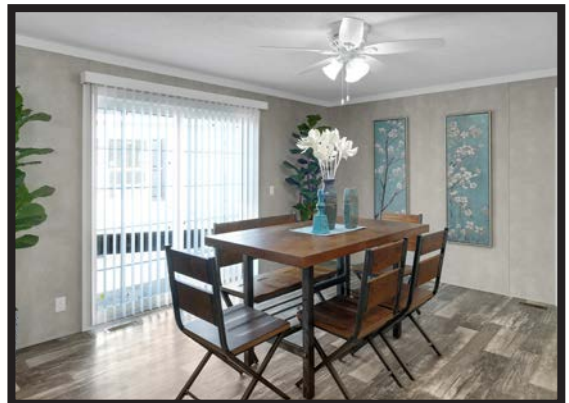
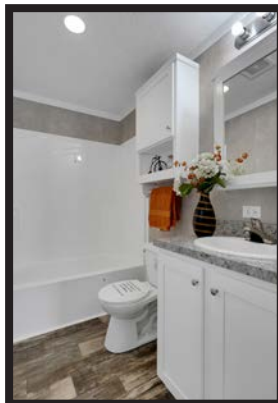
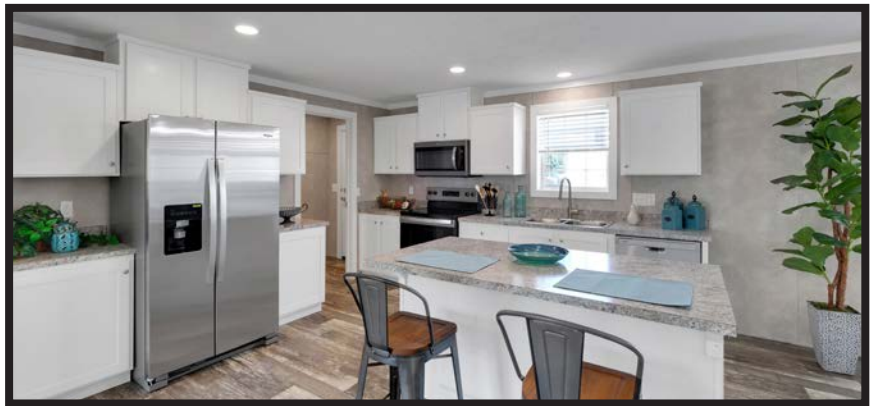
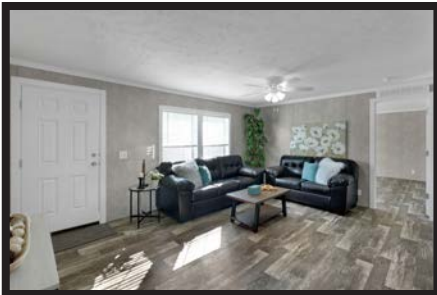
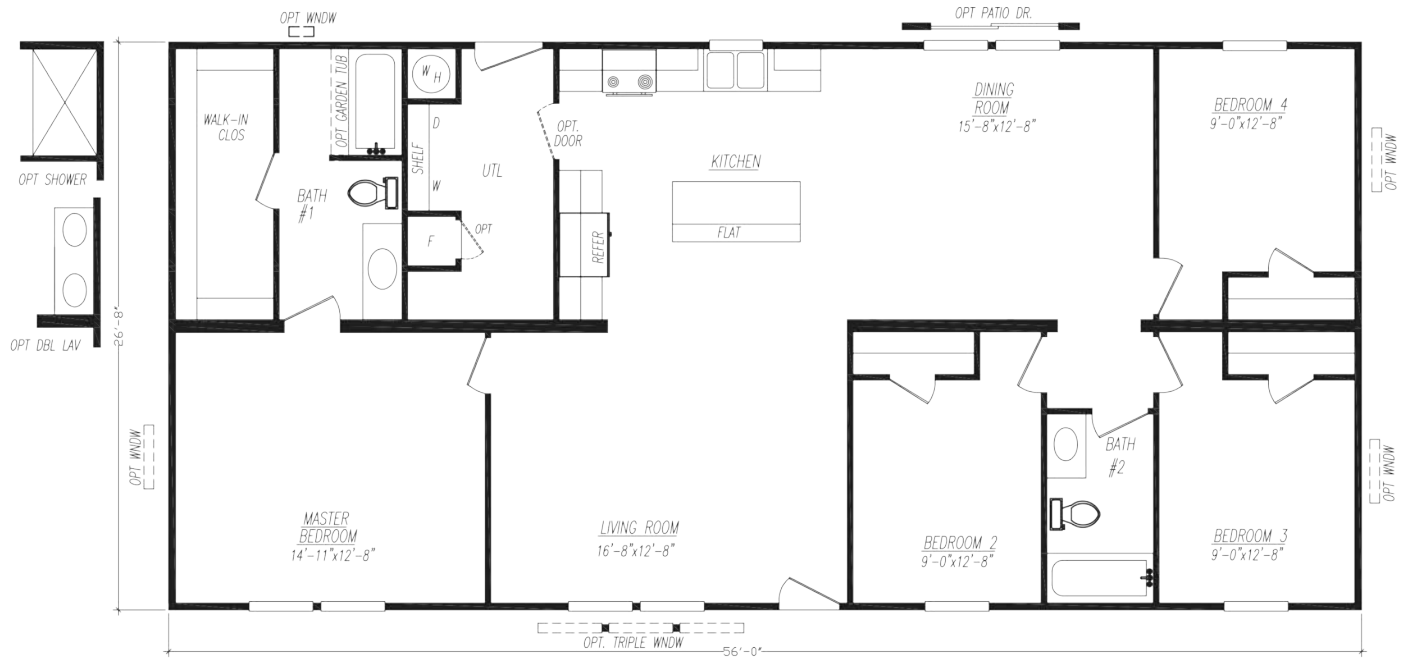
Model 4563T-KH

3 Bedroom • 2 Bath • Floor Size 1,494 sq. ft.



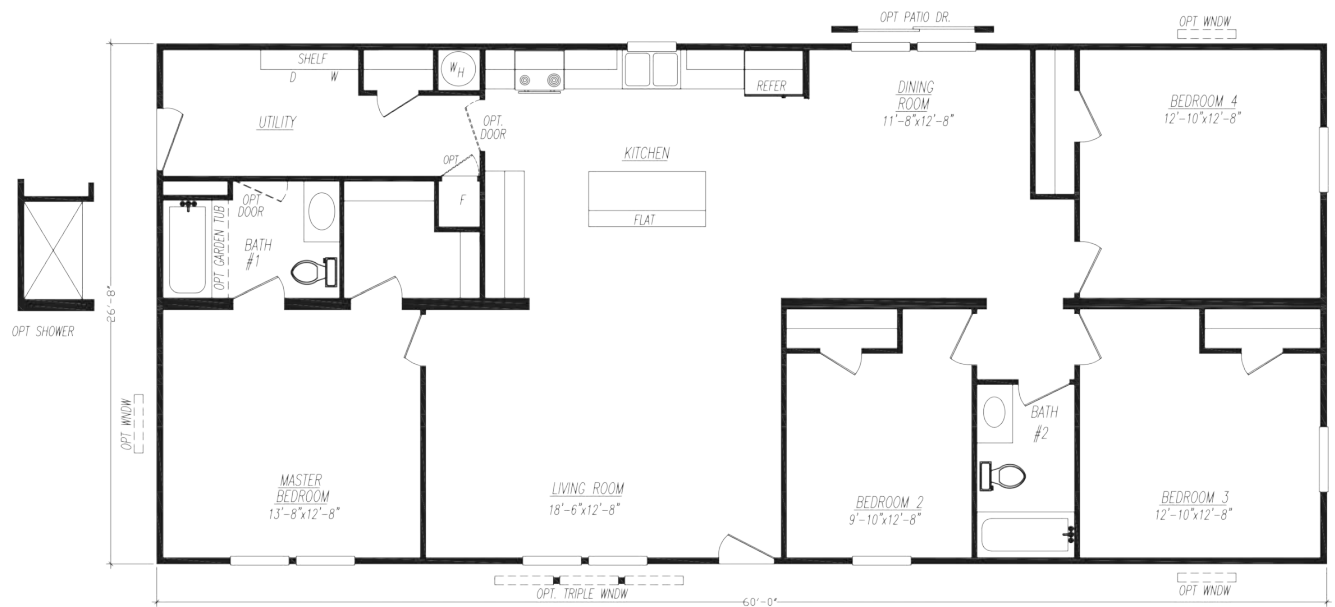
Model 4564X-KH

4 Bedroom • 2 Bath • Floor Size 1,494 sq. ft.



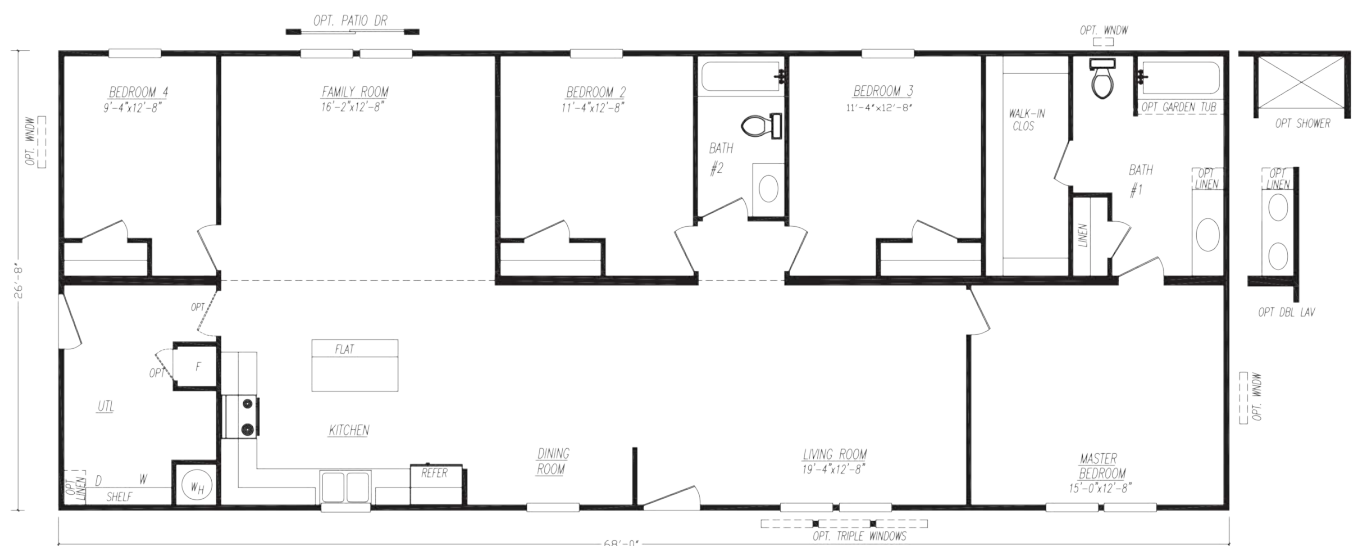
Model 4604A-KH

4 Bedroom • 2 Bath • Floor Size 1,600 sq. ft.



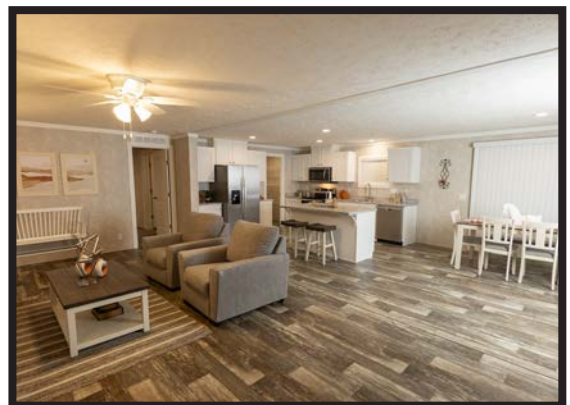
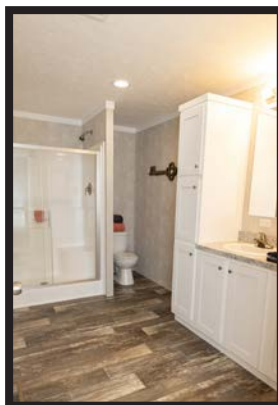
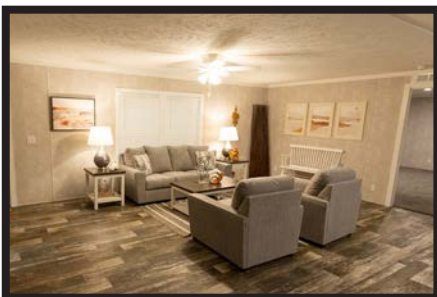
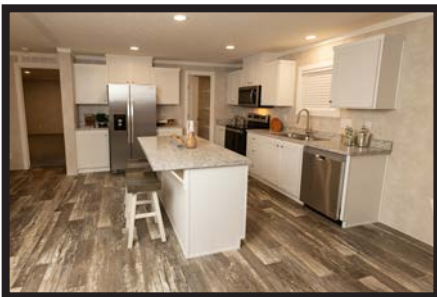
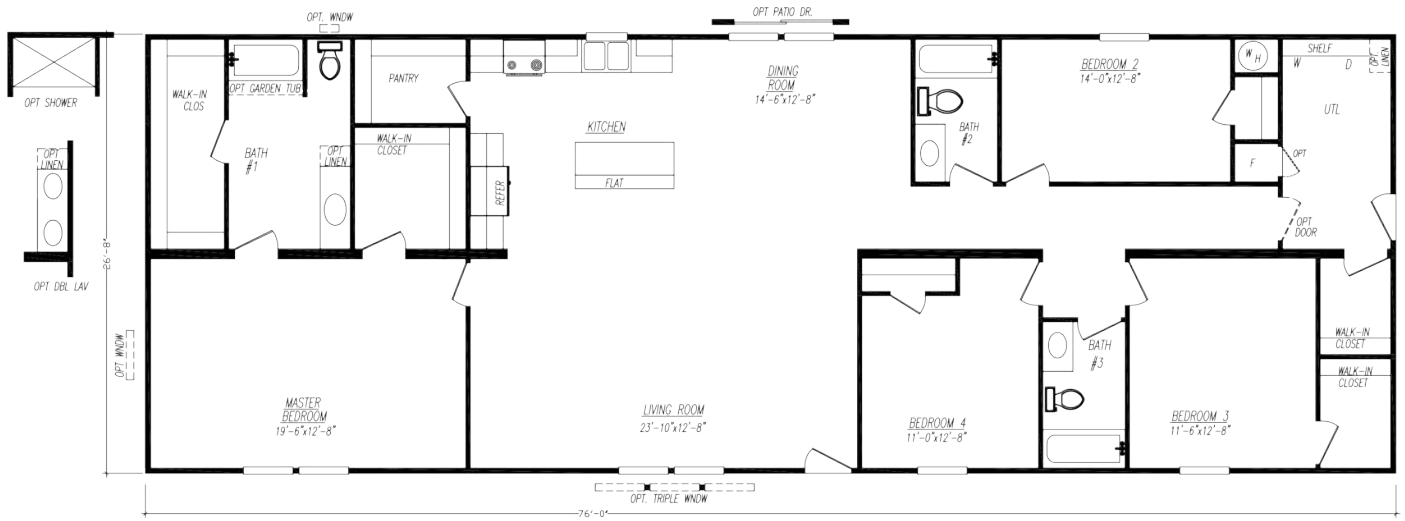
Model 4684L-KH

4 Bedroom • 2 Bath • Floor Size 1,814 sq. ft.

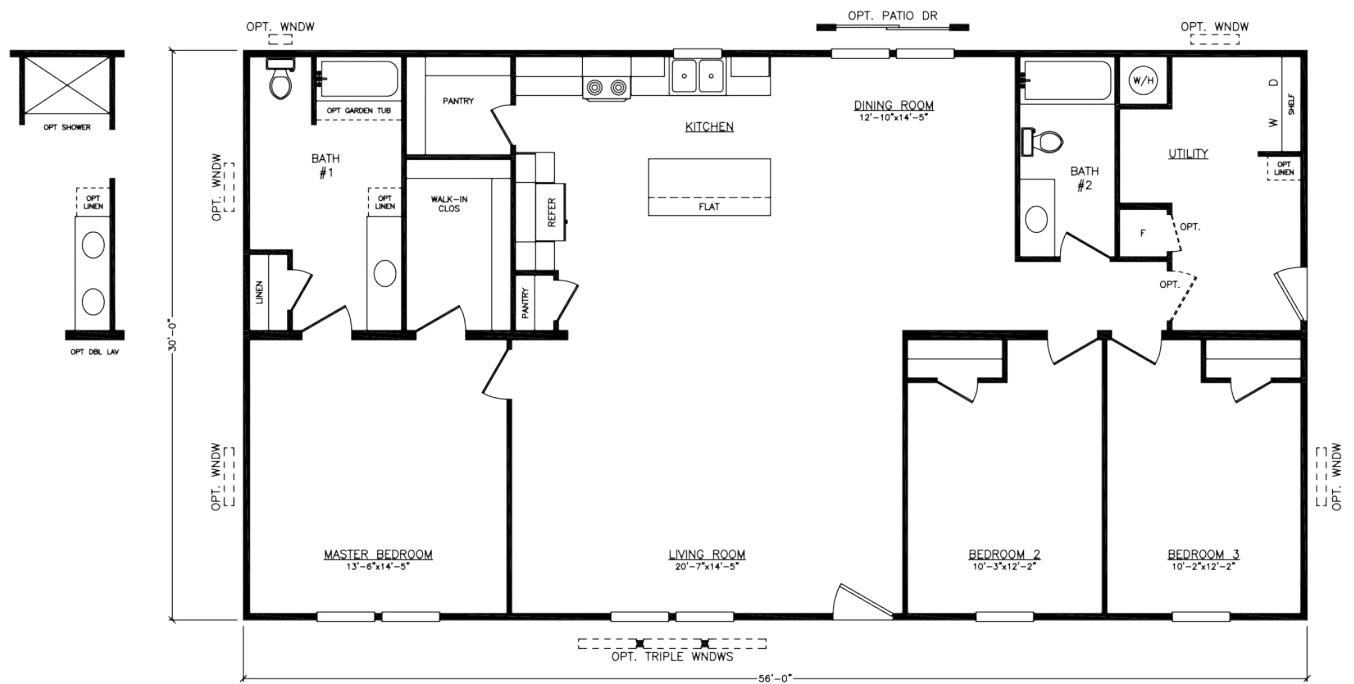


Model 4764H-KH

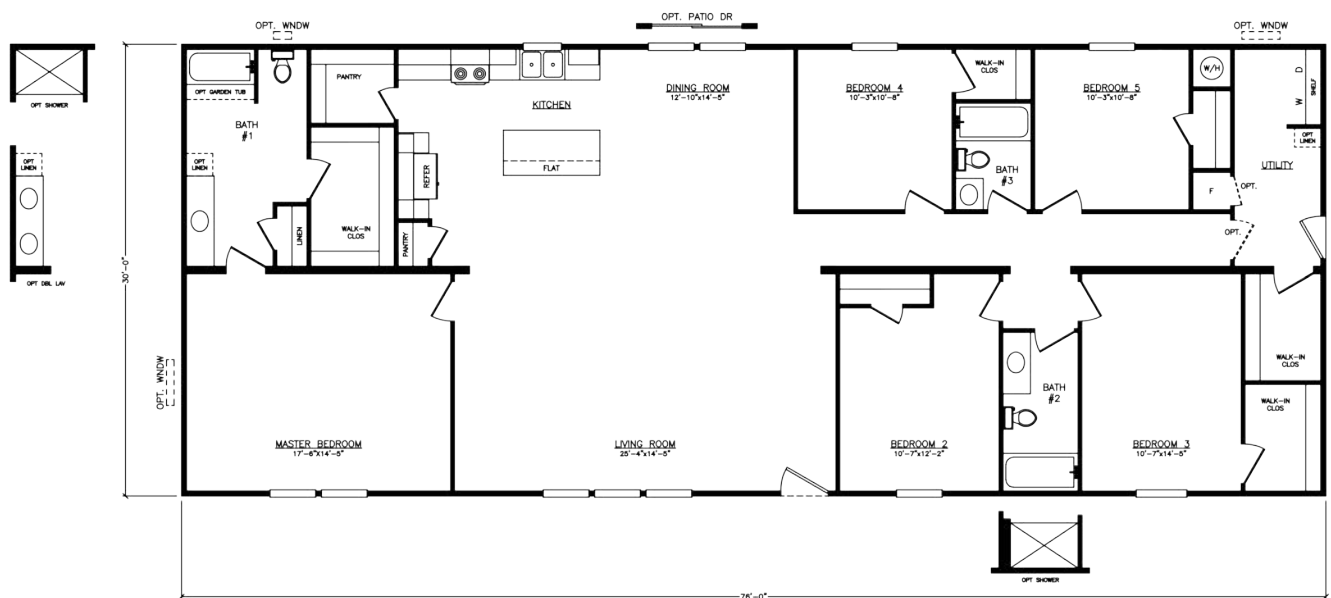
4 Bedroom • 3 Bath • Floor Size 2,027 sq. ft.



Model 0563K-KH 3 Bedroom • 2 Bath • Floor Size 1,680 sq. ft.



Model 0765T-KH 5 Bedroom • 3 Bath • Floor Size 2,280 sq. ft.

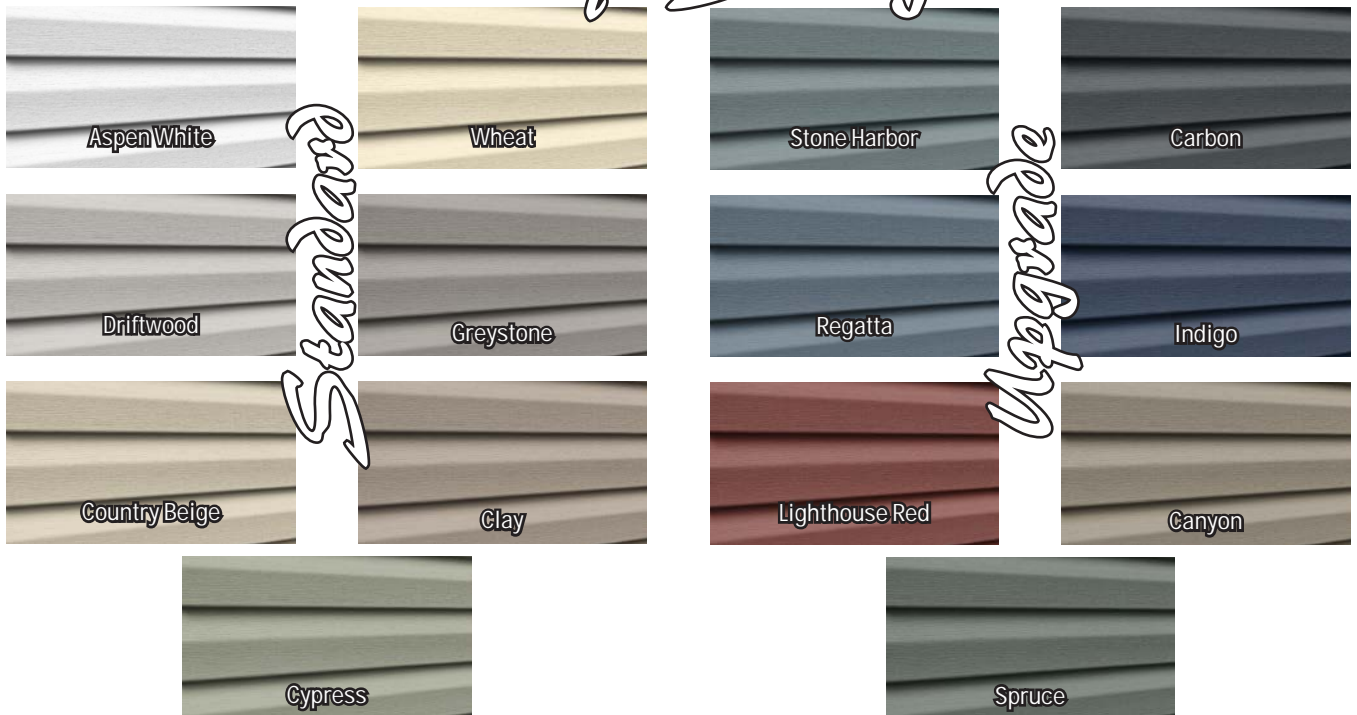


Available Options

- ☐ **Black Appliance Package #1**
Microwave, Dishwasher, 18cf O/U Refer, Coil Top Electric Range
- ☐ **Black Appliance Package #2**
Microwave, Dishwasher, SxS Refer, Coil Top Electric Range
- ☐ **Black Appliance Package #3**
Microwave, Dishwasher, 18cf O/U Refer, Smooth Top Electric Range
- ☐ **Black Appliance Package #4**
Microwave, Dishwasher, SxS Refer, Smooth Top Electric Range
- ☐ **Black Appliance Package #5**
Microwave, Dishwasher, 18cf O/U Refer, Deluxe Gas Range
- ☐ **Black Appliance Package #6**
Microwave, Dishwasher, SxS Refer, Deluxe Gas Range
- ☐ **Stainless Steel Appliance Package #4**
Microwave, Dishwasher, SxS Refer, Smooth Top Electric Range
- ☐ **Stainless Steel Appliance Package #6**
Microwave, Dishwasher, SxS Refer, Deluxe Gas Range
- ☐ **Finished Base & Center Shelf w/ Fixed Overhead Shelf**
- ☐ **Solid Cabinet Doors & Solid Cabinet Stiles**
- ☐ **Cabinet over Refrigerator**
- ☐ **2" MDF Stile Cabinet Cove**
- ☐ **3 Door Linen (where available)**
- ☐ **Overhead Cabinets above Washer & Dryer (24" tall)**
- ☐ **Optional Base & Overhead Cabinets (where available)**
- ☐ **Black Dishwasher**
- ☐ **Stainless Steel Dishwasher**
- ☐ **Black Microwave Over Range**
- ☐ **Stainless Steel Microwave Over Range**
- ☐ **Black Smooth Top Electric Range ilo Black Coil Top**
- ☐ **Stainless Steel Smooth Top Electric Range ilo Black Coil Top**
- ☐ **Black Deluxe Gas Range ilo Black Coil Top**
- ☐ **Stainless Steel Deluxe Gas Range ilo Black Coil Top**
- ☐ **Garbage Disposal**
- ☐ **Add Icemaker to 18cf O/U Refrigerator**
- ☐ **Black SxS Refrigerator ilo Black 18cf O/U**
- ☐ **Stainless Steel SxS Refrigerator ilo Black 18cf O/U**
- ☐ **1"x4" Laminate Backsplash Throughout**
- ☐ **Omit Standard Range**
 - ☐ Standard Electric Range Hookup
 - ☐ Plumb for Future Gas Range
- ☐ **Omit Standard Refrigerator**
 - ☐ Plumb for Future Icemaker
- ☐ **Plumb & Wire for Future Dishwasher**
- ☐ **Wire for Future Microwave Over Range**
- ☐ **Gas Furnace w/ 100 AMP Service**
 - ☐ 200 AMP Service
- ☐ **Upgrade Panel Box (200 AMP service only)**
- ☐ **10 Wire Thermostat**
- ☐ **Digital Thermostat**
- ☐ **40 Gallon Gas Water Heater ilo Electric**
- ☐ **Plumb for Future Gas Dryer ilo Electric**
- ☐ **Plumb for Water Softener**
- ☐ **Add Exterior Faucet**
- ☐ **Add Exterior Receptacle (with approval)**
- ☐ **Add Interior Receptacle (with approval)**
- ☐ **Freezer Receptacle on Dedicated Circuit (with approval)**
- ☐ **40 AMP A/C Disconnect**
- ☐ **Wire & Brace for Ceiling Fan (capped off)**
- ☐ **Ceiling Fan**
- ☐ **Additional Recessed Can Lights (per set)**
- ☐ **Wire & Brace for Flat Screen TV**
 - ☐ Access for TV Wiring
- ☐ **TV Jack**
- ☐ **Phone Jack**
- ☐ **Media Jack**
- ☐ **1pc Garden Tub / Shower (where available)**
- ☐ **54" Shower Stall (where available)**
- ☐ **Double Bowl Vanity (where available)**
- ☐ **Vanity Light above Bathroom Sink**
- ☐ **Mirrored Medicine Cabinet**
- ☐ **Towel Bar & Tissue Holders**
- ☐ **Medicine Cabinet**
- ☐ **Omit Standard Seams in Ceiling**
- ☐ **Stomped Ceiling ilo Popcorn**
- ☐ **Beamless Mateline**
- ☐ **MDF Mateline Ceiling Beam**
- ☐ **6" Mateline Drop Header**
- ☐ **3" MDF Stile Cove & Casing**
 - ☐ Main Living Area
 - ☐ Throughout Home
- ☐ **2" Plastic Blinds Throughout**
- ☐ **Hardwood Window Sills Throughout**
- ☐ **Add 25oz Carpet (per room)**
 - ☐ Lino Entry
- ☐ **Upgrade Siding**
- ☐ **Add Shutters (per pair)**
- ☐ **Add Smart Panel Shutters (per pair)**
- ☐ **Add Window Lineal (per window)**
- ☐ **Drop Starter Strip 3"**
- ☐ **Raise Starter Strip 5"**
- ☐ **Architectural Shingles ilo 3-Tab**
- ☐ **Full Dormer (sectional)**
- ☐ **Full Recessed Dormer (sectional)**
 - ☐ Shake Insert inside Recessed Dormer
- ☐ **Clear Skies Exterior Hitch Treatment (single section)**
- ☐ **Clear Skies Exterior Sidewall Treatment (sectional)**
- ☐ **1 set of Exterior Columns**
- ☐ **38"x82" 4 Lite Front Door (no storm)**
- ☐ **38"x82" 6 Lite Front Door (no storm)**
- ☐ **34"x82" 9 Lite Rear Door (no storm)**
- ☐ **Full View Storm Door**
- ☐ **Self-Storing Storm Door**
- ☐ **Vinyl Sliding Glass Door (where available)**
- ☐ **Optional Window (where available)**
- ☐ **14"x40" Privacy Bath Window (where available)**
- ☐ **Add Interior Passage Door (where available)**
- ☐ **Single Lever Interior Door Handles**
- ☐ **White Metal Furnace Door**
- ☐ **Foundation Ready Chassis**
- ☐ **30# Roof Load**
 - ☐ Alternate Frame for 30# Roof Load
- ☐ **Adjustable Outriggers (per set)**
- ☐ **2x6 Wall w/ R-19 Insulation**
- ☐ **R-22 Floor Insulation**
- ☐ **R-33 Roof Insulation**
- ☐ **Reverse Aisle (single section)**
- ☐ **Mirror Image**
- ☐ **End to End Flip**
- ☐ **Mirror Image & End to End Flip**

Exterior Decor Selections

Vinyl Siding



Shutters



Board & Batten



Shingles



Lineals

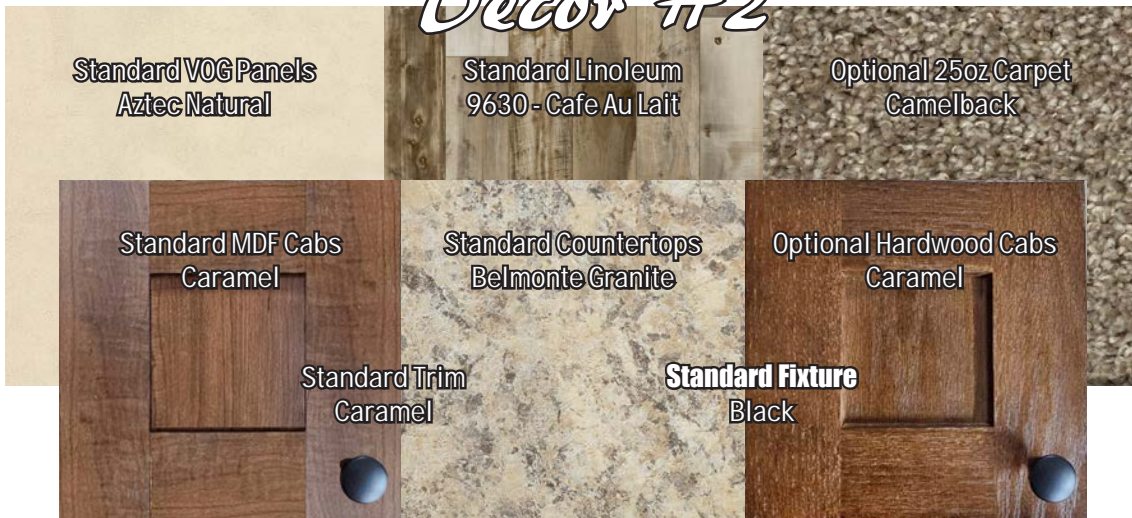


Interior Decor Selections

Decor #1



Decor #2



Decor #3



Kalahari Series

Standard Features

Exterior

Thermal Zone III Construction
Nominal 3/12 Roof Pitch
R-28-11-11 Insulation
(Additional Windows & Doors May Require Higher Insulation Values)
Vinyl Siding
7/16" OSB Wrap under Vinyl Siding
Housewrap w/ Window Tape
3-Tab Fiberglass Shingles w/ Water & Ice Shield
7/16" OSB Roof Sheathing
Dead Bolt Locks at Front and Rear (Keyed Alike)
Vinyl Single Hung Gridless Windows - Low "E" w/ Argon
Foam All Exterior Windows
38"x 82" R.O. 6 Panel Residential Front Door (No Storm)
34"x 82" R.O. 6 Panel Residential Rear Door (No Storm)
2x6 Floor Joists 16" O.C. (12', 14', 24' & 28' Wide)
2x8 Floor Joists 16" O.C. (16' & 32' Wide)
20 LB Roof Load
2x4 Exterior Walls 16" O.C.
Jelly Jar Light Fixtures at All Exterior Doors
Full Length Chassis w/ Outriggers
99.5" I-Beam Spread & Detachable Hitch

Interior

Pre-Selected Interior Décor Choices
Door Stop All 3 Sides
94" Flat Ceilings
Blown Textured Ceiling w/ Seams
OSB Tongue & Groove Floor Decking
Vinyl Wall Panels Throughout
Flat Wrapped Moldings Throughout
Vinyl Flooring Throughout
Wire Closet Shelving
2 Panel White Interior Doors Throughout
Mortised Interior Door Hinges

Because of continuous product improvements, specifications are subject to change without notice or obligation.

Electrical, Plumbing & Heating

Smoke Detectors in Main Living Areas
& All Bedrooms
200 AMP Service w/ Electric Furnace
40 Gallon Electric Water Heater
(1) Exterior Electrical Receptacle (FDS)
Copper Wiring & PEX Plumbing
Whole House Shut-off Valve near Water Heater
Water Shut-off Valves (All Sinks & Commodes)
Metal Heat Ducts
GFI Receptacles in Kitchen and Baths
LED Can Lights Throughout
(Includes Living & Family Rooms)
Plumb & Wire for Washer & Dryer
Wire Shelf above Washer & Dryer

Kitchen

Black Electric Coil Top Range
Black 18cf Refrigerator
Black 30" Power Range Hood
30" Overhead Cabinets w/ Fixed Center Shelves
Shaker Style MDF Wrapped Cabinet Doors & Stiles
Concealed Cabinet Door Hinges
Dovetail Drawers Throughout
(1) Bank of Drawers w/ Residential Rails & Guides
Laminated Countertops
Stainless Steel Kitchen Sink
Nickel Gooseneck Faucet w/ Pulldown Sprayer
Cabinet over Range & Shelf over Refrigerator

Bath

1pc Tub & Shower Combo
(Bath #1 and Additional Bathrooms)
Laminated Countertops
Mirror above Each Bathroom Sink
Power Exhaust Fan in Bathroom(s)
China Raised & Elongated Commode in Bathroom(s)
White Oval China Sink(s) w/ Single Lever Faucet(s)